



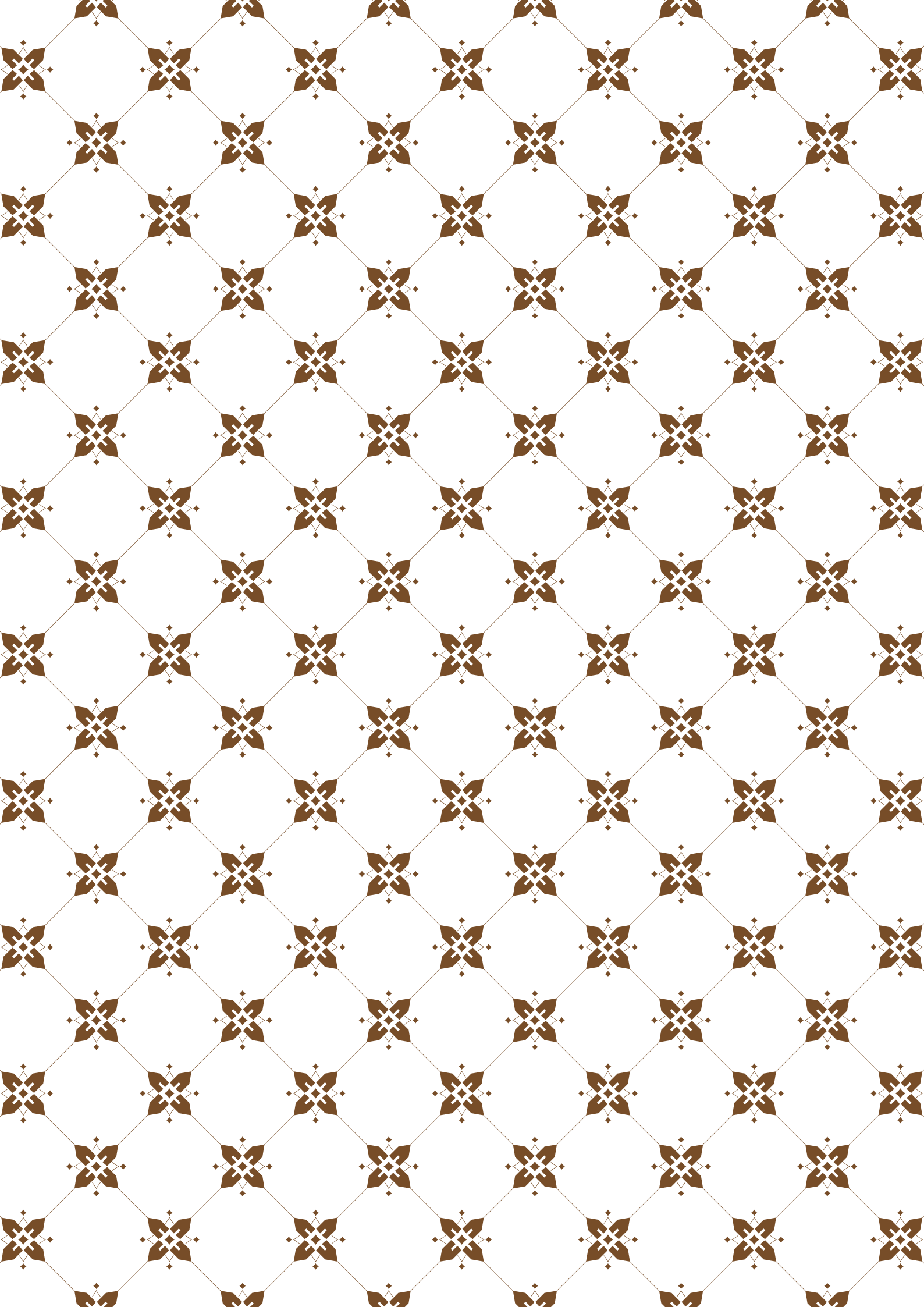
# INDIVIPRO

CARPETS & RUGS



**PUBLIC LOOKBOOK  
CARPETS & RUGS 2024**


Lookbook as of 15 april 2024 V1.0



# INDIVIPRO

CARPETS & RUGS

General Indivipro Carpets & Rugs lookbook as of April 2024 for all countries

 By clicking on a collection in the index below it will take you directly there.

ABOUT INDIVIPRO Carpets & Rugs	4	TAJ TREASURE COLLECTIONS	94
DEALERSHIP, SAMPLES & FINISH	6	ASIA	97
DESIGNER COLLECTIONS	8	BHARAT	99
BLURRY HORIZON by Jan Taminiau	9	MIZO	101
EARTH LINES by Jeroen van Zwetselaar	12	NEW DELHI	103
LODGE by Hans Kuijten	17	SHANTI	105
MISTO by Wolterinck	20	ZENITH	107
ONDE by Wolterinck	22	WALL-TO-WALL / RUG COLLECTIONS	108
ESATTO by Wolterinck	26	ASPEN	111
LIE DOWN by Francios Hannes	29	MUSE	113
OCEAN by Bertram Beerbaum	31	TENCE	115
STITCH by Bertram Beerbaum	35	WALL-TO-WAL 100% ECO FRIENDLY / 116	
TATAMI by Grand & Johnson	37	RUG COLLECTION	
REGULAR COLLECTIONS	40	GIVERNY	121
AMAR	41	LAGOS	123
BALANCE	42	SOFIA	125
BALMONT	45	OUTDOOR	126
BLOCKS & PATTERN	47	CANNES	128
BOSTON	50	COMO	128
BUKIT	53	EGYPT	128
CALAMA	56	GREECE	130
CHECKS	59	MALTA	130
CLOUD	61	MARBELLA	130
CUBA	61	ST. TROPEZ	132
DAVID	63	TUNIS	132
DYBA	65	LEGEND OF SYMBOLS	134
EMOTION	67	TERMS AND CONDITIONS	137
FAUX FUR	68		
FLORIDA	69		
JAMES	71		
LA PAZ	73		
MAIN	73		
MONTREAL	75		
NATAL	77		
OLIVER	78		
PORTLAND	79		
SALVADOR	81		
SAN JUAN	85		
SCARABEE	87		
TIDE	89		
TORONTO	91		
ZAYN	93		

*\*Out of collection: Lokum, Chili, Miquel, Paulo, Rosario, Sheep, Vegas, Veneto, Belo Horizonte, Frisco, Lyon, Marche, Milton, Pudore, Serenza, Toscane en La Paz 5,163,225*

FOLLOW US



No rights can be derived from this look book with regard to the representation of colours. These may deviate from reality due to image processing and printing. The entire content of this lookbook is subject to printing and typographical errors.





# About Indivipro Carpets & Rugs

*Luxury tailor made carpets & rugs*

Indivipro Carpets & Rugs designs, produces, and sells luxury, bespoke (designer) carpets. Headquartered in Enter, the Netherlands, the company was founded in 2014 by Chantal and Nick Otten, with a background in home decoration and accountancy.

Both companies have an international network of dealers and agents. Their close cooperation with renowned interior designers result in projects that are contracted by Intera Projects, which is the third branch of the family-owned company. Their tight-knit cooperation with designers finds application in home, hospitality, and office spaces around the world.

As Nick Otten, founder and owner of Indivipro Carpets & Rugs, always says:

**”There are no mistakes in handmade products, only unique creations”**

When cooperating with suppliers, designers, clients, partners, and let’s not forget our own people, our motto is:

**”We say what we do and we do what we say”**

Team indivipro carpets & rugs today consists of 16 employees, including board of management, design, production, sales, assembly, warehousing, and transport.

Indivipro carpets & rugsoffers an extensive variety of quality carpets and wall-to-wall rugs, available in a wide range of materials such as wool, silk, linen, bamboo, viscose, polyamide, and handwoven polyester, countless colour options, and available in almost all required measurements.

Our carpets are produced in the Netherlands, Portugal, Austria, India and Turkey. Our main office in Enter takes care of a large share of the finishing and final cutting, as well as adding blind edges.

In addition to our house-designed carpets, Indivipro Carpets & Rugs has sought a link with various Dutch interior designers, such as Marcel Wolterinck, Jan Taminiau, Hans Kuijten, Bertram Beerbaum, Grand & Johnson and François Hannes. These renowned designers have designed capsule collections, exclusively available through Indivipro Carpets & Rugs.

The majority of our carpets are custom-sized. Modern technologies go hand in hand with artisan methods, giving Indivipro Carpets & Rugs the opportunity to outfit any interior with an unique carpet or rug.

Our carpets/rugs are produced through various methods:

- Handtufted
- Robo-tufted
- Machine-tufted
- Handwoven
- Hand-knotted
- Handcrafted



**INDIVIPRO**

CARPETS & RUGS





# Dealership

## BASIC DEALER

When will you become a basic dealer?

## PREMIUM DEALER

When will you become a premium dealer?

Please contact our headoffice at:

### Indivipro Carpets & Rugs Headoffice

Vonderweg 39  
7468 DC Enter  
The Netherlands  
+31 (0) 88 500 1500  
info@indivipro.com

# Samples

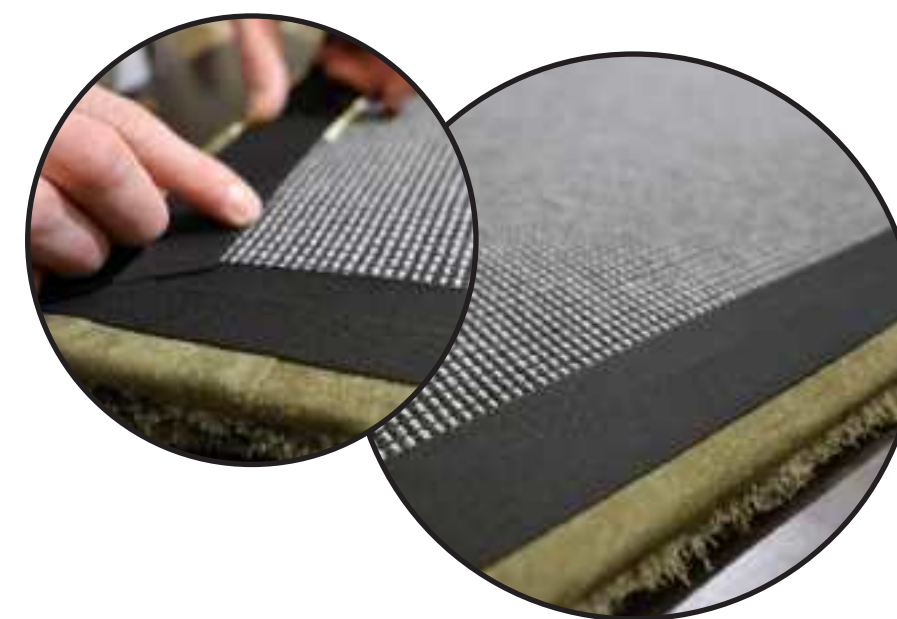
Please contact our headoffice at:

### Indivipro Carpets & Rugs Headoffice

Vonderweg 39  
7468 DC Enter  
The Netherlands  
+31 (0) 88 500 1500  
info@indivipro.com

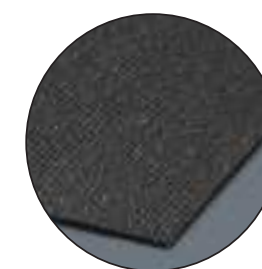
# Finish

All of our carpets will be standardly produced with blind finish basic.

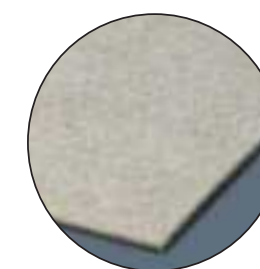


Blind finish (standard)

## Underlay/Anti-slip



Underlay Deluxe - Eco Friendly



Underlay Basic Fleece Plus\*





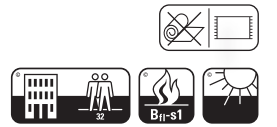


# DESIGNER COLLECTIONS

**BLURRY HORIZON BY JAN TAMINIAU** - Handtufted, material: Tencil, Thin Wool and Bamboo - colour 01 - Size 430x430 cm  
 Location: showroom Jan Taminiau Madrid



## BLURRY HORIZON BY JAN TAMINIAU



<b>SIZE (M)</b>	Custom (min. order 4 m <sup>2</sup> )
<b>Pile height</b>	18/22 mm (including backing)
<b>Material</b>	Eucalyptus/Mohair/Bamboo
<b>Quality</b>	Robotufted
<b>Price m<sup>2</sup> incl. VAT</b>	On request minimal order amount 4m <sup>2</sup>
<b>Number of colourcombinations</b>	10
<b>Delivery time (approx.)</b>	Ca. 8 weeks

### ARTWORK

Artwork size as shown in 10 colors below is 350x350cm (always ask for Artwork)



JT01



JT02



JT03



JT04



JT05



JT06



JT07



JT08



JT09



JT10

### SAMPLES

The picture below shows how our samples for the Blurry Horizon collection come. The color composition extends from the hart of the carpet to the edge. The size of a sample is: 30 x 120 cm. Samples are only available as set of all ten samples is € 2.399,- excl. VAT and shipping costs. An investment in a very unique collection. Signed by Jan Taminiau.



### ATTENTION

Please be aware of the fact that the artwork is only a color and graphic reference. No rights can be derived from this price list with regard to the representation of actual colours. These may deviate from reality due to image processing and printing.





## BLURRY HORIZON BY JAN TAMINIAU

### The Inspiration for the design

“The reason I started creating carpets and said yes to this amazing collaboration is simply because it’s something I’ve wanted to do my entire life. As a child, I always fantasized about dresses, and interior design was always a part of that. But until now, I never had the time or took the opportunity to pursue it. When the offer came from Indivipro, it was an immediate yes for me. It seemed fun, even exhilarating. From there, I set out to create, trying to stay as true to myself as possible by combining my embroidery techniques, painting skills, and weaving art. I aimed to merge the materials in a unique way and give the carpet the highest possible sensitivity. I am incredibly proud of the carpet we are presenting here. The organic shapes interwoven within it and the detailed way we played with colors make it truly special. It contains 32 different colors, all blending into each other to create a high level of color sensitivity. I am really proud that we were able to do this together and that these carpets are now ready. I am very curious to see how they will fit into customers’ homes and how people will experience them. It is important that when you see the carpet, it evokes a sense of fullness and richness. Very “huggable,” I want to cuddle with it, lie on it. And visually, it is also very appealing, making it a part of your home and your home experience.”

The inspiration for this carpet stems from my childhood fascination with stains- how they form and then fade from intense to faint shades. I marveled at a drop of water slowly spreading from intense to subtle, or the ink from my fountain pen gradually flowing from intense to vague as I doodled at school. In my mind, these occurrences often conjured landscapes with a horizon, a world of fantasy. In fact, my entire career has been dedicated to ‘playing’ with this concept, striving to replicate the behavior of stain formation.

In the carpet, named Blurry Horizon, the flow of colors is vividly evident. One pigment displaces the other, a technique reminiscent of the marbling technique we utilized in crafting dresses, akin to those seen inside book covers.

Throughout the creation of this carpet, after extensive experimentation, we successfully achieved this effect by employing a mix of different yarns. The organic shape further enhances the illusion of stains, giving the impression that colors seamlessly blend into each other when the carpet adorns the floor. I am immensely proud and delighted with the result, and it undoubtedly leaves me yearning for more opportunities to explore this artistic endeavor further.



Jan Taminiau (designer) and Chantal Otten (co-owner of Indivipro).

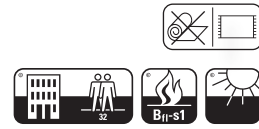


Jan Taminiau, is a Dutch designer. This year is his 20th anniversary as an independent fashion designer.

Growing up in a family of antique dealers, I have always had a passion for interiors. To me, interior design is akin to creating an intricate couture embroidered dress, where each element must be carefully placed to make it special and unique. That is why I am proud to have designed my first carpet in collaboration with Indivipro.







<b>Width</b>	Custom (min. order 4 m <sup>2</sup> )
<b>Pile height</b>	Basis: 18mm, Lines 28mm, 14mm
<b>Material</b>	Eucalyptus/New Zealand Wool
<b>Quality</b>	Robotufted
<b>Price m<sup>2</sup> incl. VAT</b>	On request
<b>Number of colourcombinations</b>	6
<b>Delivery time (approx.)</b>	Ca. 8 weeks

RENEWED  
QUALITY



24-01



24-02



24-03



24-04



24-05



24-06

*\*We would like to inform our customers that we have introduced a renewed quality, for which we have new sample materials available. We kindly ask customers to take this into consideration before placing orders.*

## PRODUCT INFORMATION

**General information** This is a tufted carpet collection available in Eucalyptus with NZ-Wool. This quality is good to clean.

**Maintenance** During the first months it is normal that pilling may occur. This is not a manufacturing defect; it is another common characteristic of this type of fibers. The quantity of pilling will start diminishing after some weeks of use and it does not affect in any aspect the rug's resistance, aspect and quality. It is very important to vacuum the rugs often, in order to clean it and also to recover the pile, which might present some height differences due to high people traffic and wear. Naturally, lighter rugs need to be cleaned more than darker ones. Steam cleaning or any other methods which involve a substantial increase of temperature are not recommended. Remove stains immediately and if problems with stains occur we advise to contact a professional carpet cleaner.

**Size deviation** Size deviations are up to about 3% possible. Because of the nature of this quality, this product can stretch a little bit.

**Colour** The fibers are products of nature and as with all natural products, a slight deviation in texture and colour may occur between dye lots.

**Colour fastness** 4 or above (scale 1-5) [very good]

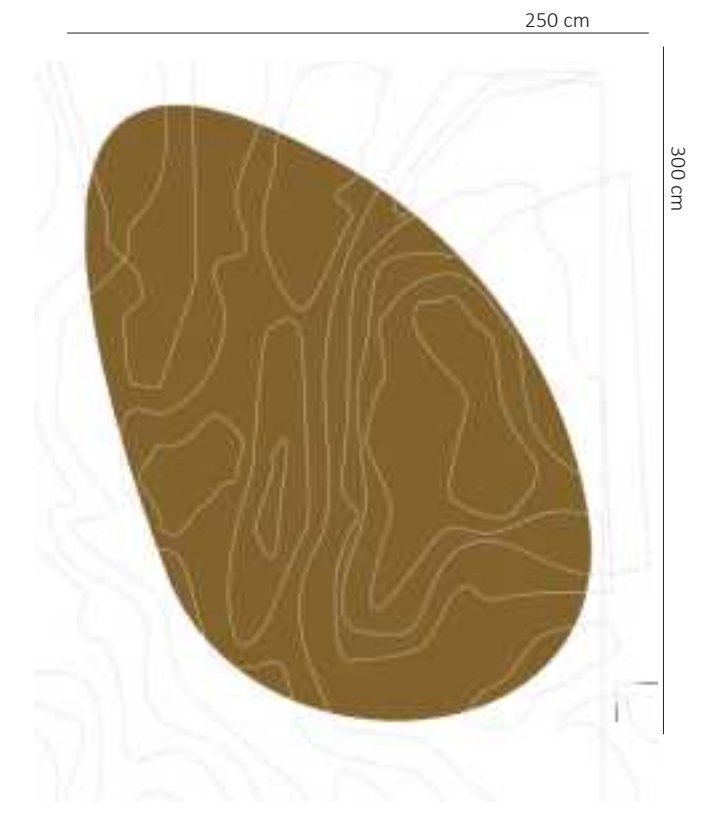
**Backing** The backing is made of polyester. Since it is used for the back side of the rugs there is no flame danger for backing as well. Polyester is a petroleum based material. This is as maximum eco-friendly as other petroleum based materials.

**Extra information** Please do not store rolls packed longer than 3-4 weeks.

**Anti-slip** Anti-slip is available separately in two different fixed sizes, as a roll for installation or fitted custom made to the carpet.

Rockin' Earth Lines by Jeroen van Zwetselaar has organic and conscious characteristics. The natural blend of raw textures and organic appearance recall the connection with both earth and rippling ocean waters. Designed to create both a calm and awaken sense. The various heights of the tuft and flowing shapes bring excitement into the design, adding depth to the hand-tufted rug. A composition of dusky green, warm earth tones and watery blue accents.

See the sketches below for the outcome of the design on different carpet sizes







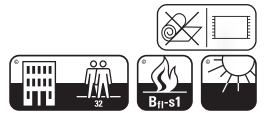
EARTH LINES BY JEROEN VAN ZWETSELAAR - Handtufted, material: Eucalyptus/New Zealand Wool- Color: 05





LODGE BY HANS KUIJTEN - Handtufted, material: New Zealand wool /Tencel

## LODGE BY HANS KUIJTEN



<b>Width</b>	Custom (min. order 4 m <sup>2</sup> )
<b>Pile height</b>	14/18/22mm
<b>Material</b>	New Zealand wool /Tencel
<b>Quality</b>	Robotufted
<b>Price m<sup>2</sup> incl. VAT</b>	On request
<b>Number of colourcombinations</b>	1
<b>Delivery time (approx.)</b>	Ca. 8 weeks



01

### PRODUCT INFORMATION

<b>General information</b>	This is a tufted carpet collection available in new zealand wool with tencel. Ths quality is good to clean.
<b>Additional prices</b>	For special shape the surcharge is 20% of the rug.
<b>Maintenance</b>	Wool may have light pilling, this is a natural characteristic. You can vacuum this quality rug. You can carefully cut away any extruding Wool or Linen fibers on the reverse side of the rug with a pair of scissors.
<b>Size deviation</b>	Size deviations are up to about 3% possible. Because of the nature of this quality, this product can stretch a little bit.
<b>Colour</b>	Because of the nature of the quality each rug has its unique colour. The colour may differ and depend on each dye bath. Always avoid direct sunlight. Longer periods of exposure to direct sunlight will damage the rug and lead to discolouring.
<b>Fire classification</b>	Fire classification- Bfl-S1
<b>Colour fastness</b>	4 or above (scale 1-5) [very good]
<b>Backing</b>	Synthetic latex with resistance to temperatures over 200 °C. This backing is non-flammable and does not maintain combustion. However it is necessary to inform you that if a wooden floor where the carpet have been applied begin combustion, the carpet will eventually ignite.
<b>Extra information</b>	Please do not store rolls packed longer than 3-4 weeks.
<b>Anti-slip</b>	Anti-slip is available separately in two different fixed sizes, as a roll for installation or fitted custom made to the carpet. See <a href="#">page 7</a> of this lookbook for all options we offer.





## DESIGN BY HANS KUIJTEN

It all began with the question of whether we wanted to redesign and man a booth for the Excellent Fair 2023. As Studio Hans Kuijten, we had an incredible booth in 2022, and we aimed for even more this time around. The new challenge was to develop a concept and build everything around it. Not just a house or booth, but a narrative that conveys the design and interior experience. Let's call it a framework.

I quickly conceived THE LODGE. A concept of a warm and cozy house, a home nestled in the woods, somewhere in Canada or perhaps Switzerland. It exuded an ASPEN atmosphere with corresponding look and feel- warm, robust colors, formal language, and a rugged luxury ambiance. The materials were warm and rugged yet also cuddly and cozy. This is where the idea for the carpet originated. We envisioned a beautiful corner in the house with leather walls, a rugged fireplace wall with steel and wood, and in front of it, an animalistic carpet themed after the forest. On the carpet, in front of the fireplace, sat our own STRONG ONE chairs and the STRONG TABLE. Both sleek and rugged in design, exuding a LODGE feeling as a common thread.

We quickly settled on the patterns that are now used in the Indivipro carpet. Especially from above, you could easily see a landscape or wooded area in it. Rugged, robust, warm, and green tones formed the base. The various layers in the height of the wool added extra luxury to the carpet, giving it an additional allure. The colors, featuring green and brown tones, became a welcome yet striking choice. The round version of the carpet further enhanced its uniqueness. It was meant to be seen and stand out without being overwhelmingly present, so to speak.

The quality of THE LODGE as a design house was also reflected in the carpet as a whole. Placed on a rugged wooden floor, it stood out even more. It was a successful mission, resulting in a warm and luxurious product.



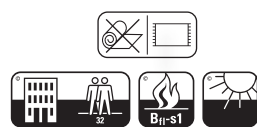
LODGE BY HANS KUIJTEN - Handtufted, material: New Zealand wool /Tencel







## MISTO BY MARCEL WOLTERINCK



<b>Width</b>	Custom (min. order 4 m <sup>2</sup> )
<b>Pile height</b>	30mm
<b>Material</b>	100% New Zealand wool
<b>Quality</b>	Robotufted
<b>Weight per M2</b>	4,5kg
<b>Price m<sup>2</sup> incl. VAT</b>	On request
<b>Number of colourcombinations</b>	8
<b>Delivery time (approx.)</b>	Ca. 8 weeks



01



02



03



04



05



06



07



08

### PRODUCT INFORMATION

<b>General information</b>	This is a tufted carpet collection available in new zealand wool. Ths quality is good to clean.
<b>Additional prices</b>	For special shape the surcharge is 20% of the rug.
<b>Maintenance</b>	Wool may have light pilling, this is a natural characteristic. You can vacuum this quality rug. You can carefully cut away any extruding Wool fibers on the reverse side of the rug with a pair of scissors.
<b>Size deviation</b>	Size deviations are up to about 3% possible. Because of the nature of this quality, this product can stretch a little bit.
<b>Colour</b>	Because of the nature of the quality each rug has its unique colour. The colour may differ and depend on each dye bath. Always avoid direct sunlight. Longer periods of exposure to direct sunlight will damage the rug and lead to discolouring.
<b>Fire classification</b>	Fire classification- Cfl-s1 certified
<b>Colour fastness</b>	4 or above (scale 1-5) [very good]
<b>Backing</b>	Synthetic latex with resistance to temperatures over 200 °C. This backing is non-flammable and does not maintain combustion. However it is necessary to inform you that if a wooden floor where the carpet have been applied begin combustion, the carpet will eventually ignite.
<b>Extra information</b>	Please do not store rolls packed longer than 3-4 weeks.
<b>Anti-slip</b>	Anti-slip is available separately in two different fixed sizes, as a roll for installation or fitted custom made to the carpet. See <a href="#">page 7</a> of this lookbook for all options we offer.



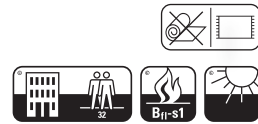
MISTO BY MARCEL WOLTERINCK - 100% New Zealand Wool - color 01







## ONDE BY MARCEL WOLTERINCK



<b>Max. width (custom)</b>	Custom (min. order 4 m <sup>2</sup> )
<b>Pile height</b>	ca. 12 mm low stripes with 20 mm high stripes
<b>Material</b>	100% New Zealand wool
<b>Quality</b>	Robotufted
<b>Weight per M2</b>	4,5kg
<b>Price m<sup>2</sup> incl. VAT</b>	On request
<b>Number of colours</b>	8
<b>Delivery time (approx.)</b>	Ca. 8 weeks

**RENEWED QUALITY**



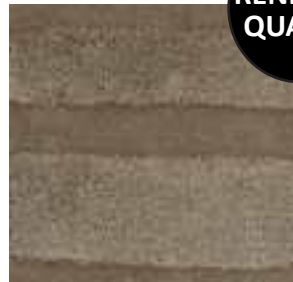
OD-01



OD-02



OD-03



OD-04



OD-05



OD-06



OD-07



OD-08

*\*We would like to inform our customers that we have introduced a renewed quality, for which we have new sample materials available. We kindly ask customers to take this into consideration before placing orders.*

### PRODUCT INFORMATION

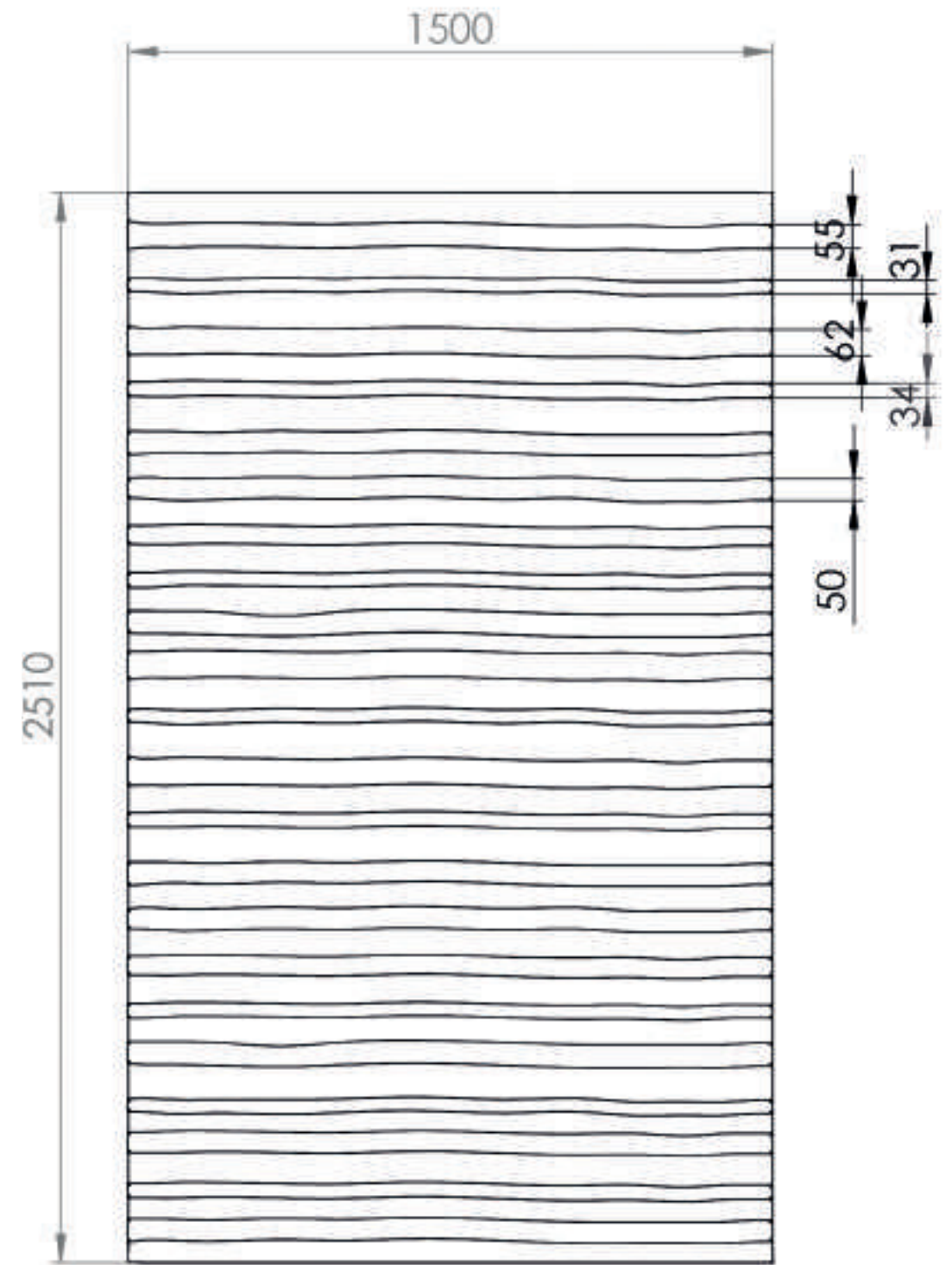
<b>General information</b>	100% New Zealand Wool is a silk-like yarn. This is a very durable and resilient quality. Each yarn needs to be coloured in a dye bath, so the colours per rug may differ slightly. It is durable, elastic, crease resistant and flame resistant. In the rug section this is known as a luxury fiber.
<b>Additional prices</b>	For special shape the surcharge is 20% of the rug.
<b>Maintenance</b>	In the beginning the rug may have light pilling, this is a natural characteristic. We advise to vacuum clean this rug regularly, to keep the quality the best.
<b>Size deviation</b>	Size deviations are up to about 3% possible. Because of the nature of this quality, this product can stretch a little bit.
<b>Colour</b>	Because of the nature of the quality each rug has its unique colour. The colour may differ and depend on each dye bath. Always avoid direct sunlight.
<b>Fire classification</b>	Fire classification- Bfl-s1 certified
<b>Backing</b>	Synthetic latex with resistance to temperatures over 200 °C. This backing is not inflammables and does not maintain combustion. However it is necessary to inform you that if a wooden floor where the rug have been applied begin combustion, the rug will eventually ignite.
<b>Extra information</b>	Please do not store rolls packed longer than 3-4 weeks.
<b>Anti-slip</b>	Anti-slip is available separately in two different fixed sizes, as a roll for installation or fitted custom made to the carpet. See <a href="#">page 7</a> of this lookbook for all options we offer.

## ONDE DESIGN

The design ONDE is made with "waves". This means that stripes have different width differences and that these stripes won't ever be straight.

Below example shows the design of a rug with a size of 150 x 251 cm.

NOTE: In case you are ready to order and if you want to double-check your design with our production, please note this to your purchase order.







ONDE - 100% New Zealand wool - colour 04

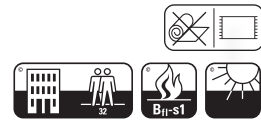


Esatto - 90% New Zealand wool/ 10% Tencel - colour 03





## ESATTO BY MARCEL WOLTERINCK



<b>Max. width (custom)</b>	Custom (min. order 4 m <sup>2</sup> )
<b>Pile height</b>	14 mm bricks (new zealand wool), 10 mm lines (tencel)
<b>Material</b>	90% New Zealand Wool, 10% Tencel
<b>Quality</b>	Robotufted
<b>Weight per M2</b>	4,42Kg
<b>Price m<sup>2</sup> incl. VAT</b>	On request
<b>Number of colours</b>	7
<b>Delivery time (approx.)</b>	Ca. 8 weeks

## ESATTO DESIGN

Below you will find an explanation for making a calculation for the width of the rug ESATTO 03. On the side of the rug you will need at least 12 cm of the next pattern. Ofcourse it is possible to have more than 12 cm. The length of the rug you can choose on custom size (see sketch below of an example).

NOTE: In case you are ready to order and if you want to double-check your design with our production, please note this to your purchase order.



\*We would like to inform our customers that we have introduced a renewed quality, for which we have new sample materials available. We kindly ask customers to take this into consideration before placing orders.

### PRODUCT INFORMATION

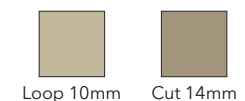
<b>General information</b>	This is a tufted rug collection available in wool with lines in tencel.
<b>Maintenance</b>	In the beginning the rug may have light pilling, this is a natural characteristic. We advise to vacuum clean this rug regularly, to keep the quality the best.
<b>Additional prices</b>	For special shape the surcharge is 20% of the rug.
<b>Size deviation</b>	Size deviations are up to about 3% possible. Because of the nature of this quality, this product can stretch a little bit.
<b>Colour</b>	Because of the nature of the quality each rug has its unique colour. The colour may differ and depend on each dye bath. Always avoid direct sunlight.
<b>Fire classification</b>	Bfl-s1 certified
<b>Backing</b>	Synthetic latex with resistance to temperatures over 200 °C. This backing is not inflammables and does not maintain combustion. However it is necessary to inform you that if a wooden floor where the rug have been applied begin combustion, the rug will eventually ignite.
<b>Extra information</b>	Please do not store rolls packed longer than 3-4 weeks.
<b>Anti-slip</b>	Anti-slip is available separately in two different fixed sizes, as a roll for installation or fitted custom made to the carpet. See <a href="#">page 7</a> of this lookbook for all options we offer.



Sample with 30cm x 20cm



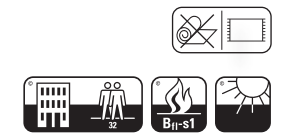
Sample with 40cm x 30cm



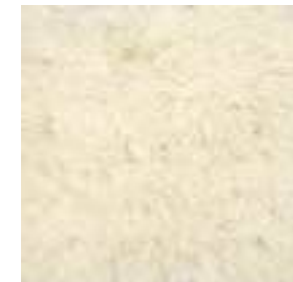




## LIE DOWN BY FRANÇOIS HANNES



<b>Width</b>	Custom (min. order 4 m <sup>2</sup> )
<b>Pile height</b>	45 mm
<b>Material</b>	80% New Zealand Wool/ 20% Linen
<b>Quality</b>	Robotufted
<b>Weight per M2</b>	4,5 kg
<b>Price m<sup>2</sup> incl. VAT</b>	On request
<b>Number of colours</b>	8
<b>Delivery time (approx.):</b>	Ca. 8 weeks



23-01



23-02



23-03



23-04



23-05



23-07



23-08



23-10

### PRODUCT INFORMATION

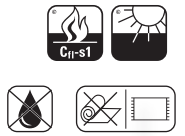
<b>General information</b>	This is a tufted carpet collection available in new zealand wool with linen. This quality is good to clean.
<b>Additional prices</b>	For special shape the surcharge is 20% of the rug.
<b>Maintenance</b>	Wool may have light pilling, this is a natural characteristic. You can vacuum this quality rug. You can carefully cut away any extruding Wool or Linen fibers on the reverse side of the rug with a pair of scissors.
<b>Size deviation</b>	Size deviations are up to about 3% possible. Because of the nature of this quality, this product can stretch a little bit.
<b>Colour</b>	Because of the nature of the quality each rug has its unique colour. The colour may differ and depend on each dye bath. Always avoid direct sunlight. Longer periods of exposure to direct sunlight will damage the rug and lead to discolouring.
<b>Fire classification</b>	Bfl-s1 certified
<b>Colour fastness</b>	4 or above (scale 1-5) [very good]
<b>Backing</b>	Synthetic latex with resistance to temperatures over 200 °C. This backing is non-flammable and does not maintain combustion. However it is necessary to inform you that if a wooden floor where the carpet have been applied begin combustion, the carpet will eventually ignite.
<b>Extra information</b>	Please do not store rolls packed longer than 3-4 weeks.
<b>Anti-slip</b>	Anti-slip is available separately in two different fixed sizes, as a roll for installation or fitted custom made to the carpet. See <a href="#">page 7</a> of this lookbook for all options we offer.







## OCEAN BY BERTRAM BEERBAUM



<b>Max. width (custom)</b>	Custom (min. order 4 m <sup>2</sup> )
<b>Pile height</b>	12/14 mm
<b>Material</b>	70% Eucalyptus/ 30% New Zealand wool
<b>Quality</b>	Robotufted
<b>Weight per M2</b>	4,96kg
<b>Price m<sup>2</sup> incl. VAT</b>	On request
<b>Number of colours</b>	5
<b>Delivery time (approx.):</b>	Ca. 8 weeks



DLV-06



DLV-07



DLV-08



DLV-09



DLV-10

### PRODUCT INFORMATION

<b>Additional prices</b>	For special shape the surcharge is 20% of the rug.
<b>Colour</b>	Because of the nature of the quality each rug has its unique colour. The colour may differ and depend on each dye bath. Always avoid direct sunlight. Longer periods of exposure to direct sunlight will damage the rug and lead to discolouring.
<b>Colour fastness</b>	4 or above
<b>Fire classification</b>	Fire classification- Cfl-s1 certified
<b>Size deviation</b>	Size deviations are up to about 3% possible. Because of the nature of this quality, this product can stretch a little bit.
<b>Backing</b>	Synthetic latex with resistance to temperatures over 200 °C. This backing is non-flammable and does not maintain combustion. However it is necessary to inform you that if a wooden floor where the carpet have been applied begin combustion, the carpet will eventually ignite.
<b>Extra information</b>	Please do not store rolls packed longer than 3-4 weeks.
<b>Anti-slip</b>	Anti-slip is available separately in two different fixed sizes, as a roll for installation or fitted custom made to the carpet. See <a href="#">page 7</a> of this lookbook for all options we offer.





# OCEAN DESIGN

Below you will find an design of The Ocean DLV09 (200 x 400cm)

NOTE: In case you are ready to order and if you want to double-check your desgin with our production, please note this to your purchase order.



Loop 12mm

Cut 14mm



OCEAN - 70% Eucalyptus, 30% New Zealand Wool - DLV- 09

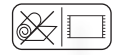






STITCH - 100% Wool- colour JNA 5

## STITCH BY BERTRAM BEERBAUM



BERTRAM BEERBAUM

<b>Width</b>	Custom
<b>Pile height</b>	7 mm
<b>Material</b>	100% Wool
<b>Quality</b>	Handmade
<b>Price m<sup>2</sup> incl. VAT</b>	On request
<b>Number of colours</b>	7
<b>Delivery time (approx.):</b>	8-10 weeks



STITCH NATAL  
JNA 1



STITCH NATAL  
JNA 3



STITCH NATAL  
JNA 4



STITCH NATAL  
JNA 5



STITCH NATAL  
JNA 6



STITCH NATAL  
JNA 7



STITCH NATAL  
JNA 18

### PRODUCT INFORMATION

<b>General information</b>	This is a handstitched rug collection made of wool. The jute core of the rug gives this product more stable lying property.
<b>Additional prices</b>	For special shape the surcharge is 20% of the rug.
<b>Maintenance</b>	You can easily use a vacuum cleaner for the wool- and synthetic fiber rugs. We advise to turn the wool rug 3 to 4 times a year to change the direction of the rug. The pierced wool fibers on the back of the rug should be carefully cut with scissors. Lay the rug in the snow in winter and beat well.  Remove stains with regular soap or with a special wool detergent. Repeat this procedure if necessary. For stronger contamination: have the rug professionally cleaned. If this is not possible, try to dry clean.
<b>Size deviation</b>	Size deviations are up to about 3% possible. Because of the nature of this quality, this product can stretch a little bit.
<b>Finish</b>	Standard are these rugs produced without fringes, but this is possible when noting this to your order. The finish of these rugs is standard on the short sides of the rug. Fringes are approx. 15 cm. The calculation for these fringes will be extra calculated on top of the ordered m <sup>2</sup> size.
<b>Anti-slip</b>	Anti-slip is available separately in two different fixed sizes, as a roll for installation or fitted custom made to the carpet. See <a href="#">page 7</a> of this lookbook for all options we offer.







<b>Width</b>	Custom (min. order 4 m <sup>2</sup> )
<b>Pile height</b>	14 + 12 mm
<b>Material</b>	New Zealand Wool / Eucalyptus
<b>Quality</b>	Robotufted
<b>Price m<sup>2</sup> incl. VAT</b>	On request
<b>Number of colourcombinations</b>	9
<b>Delivery time (approx.)</b>	Ca. 8 weeks



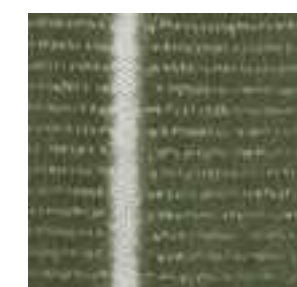
01



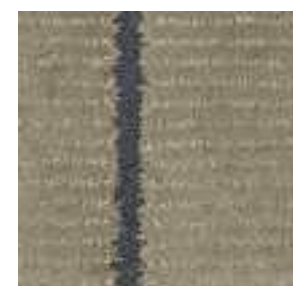
02



03



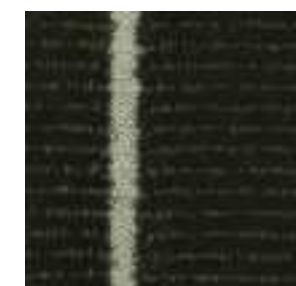
04



05



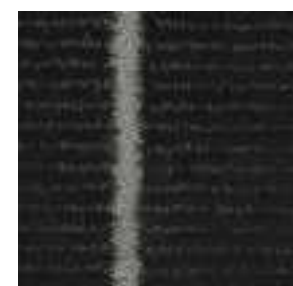
06



07



08



09

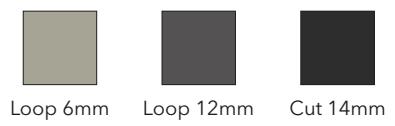
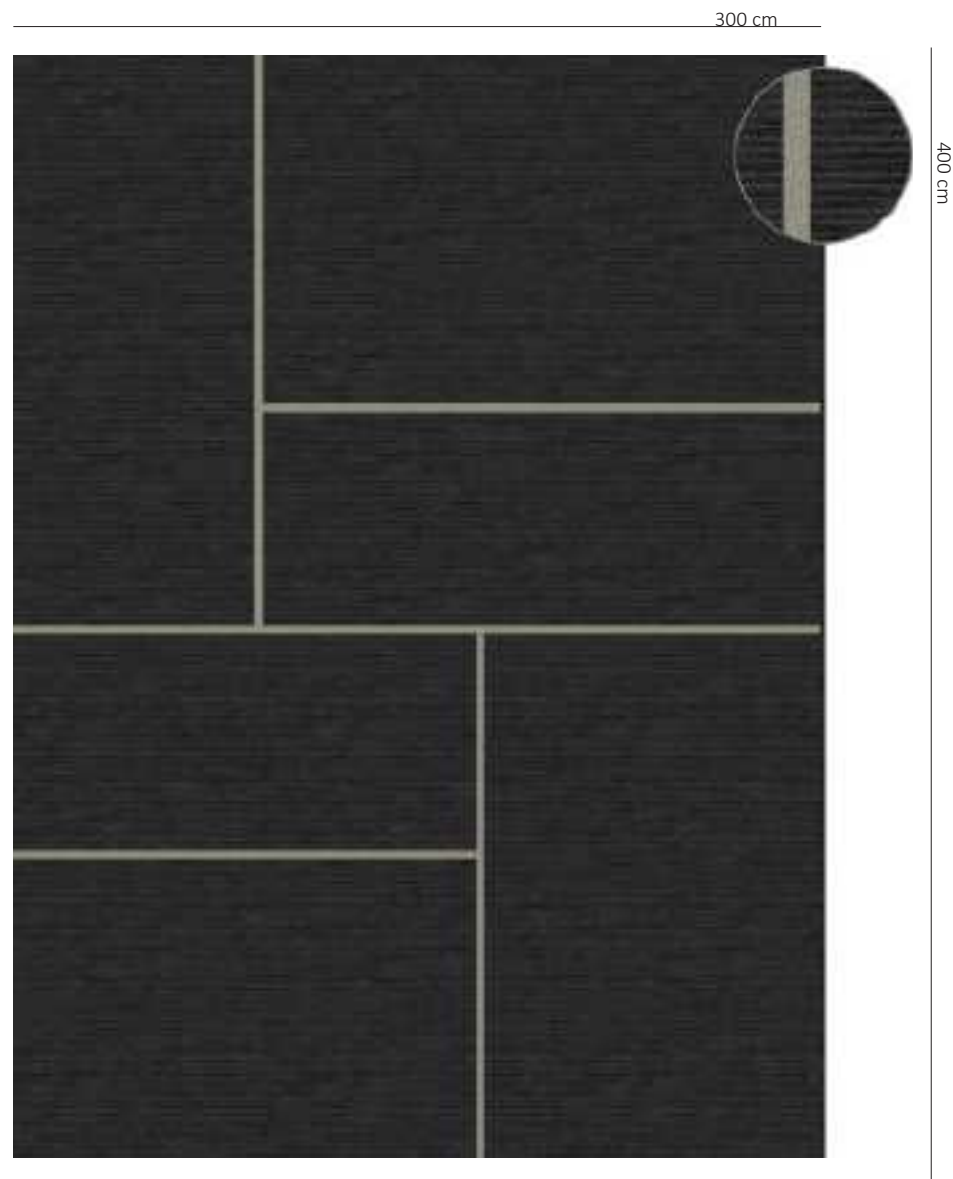
**NOTE:** Check the product details of this product at page 31





The design of the tatami 09 can be found below. This design has the size of 300 x 400 cm.

NOTE: In case you are ready to order and if you want to double-check your design with our production, please note this to your purchase order.







# REGULAR COLLECTIONS

AMAR - 100% Jute - colour 013

Interior by: Meubelpark de bongerd

## AMAR

<b>Width</b>	Custom 0-300 cm width	Custom 301-500 cm width	Standard 200 x 300 cm	
<b>Pile height</b>	0 mm as it has flat Handknotted surface (Total height 8mm)			
<b>Material</b>	100% Jute			
<b>Quality</b>	Handknotted			
<b>Price m<sup>2</sup> incl. VAT</b>	On request	On request	On request	

**Number of colours**: 10  
**Delivery time (approx.):** 12-14 weeks



NES 001 NES 002 NES 004 NES 005  
 NES 007 NES 008 NES 009 NES 010  
 NES 011 NES 013

### PRODUCT INFORMATION

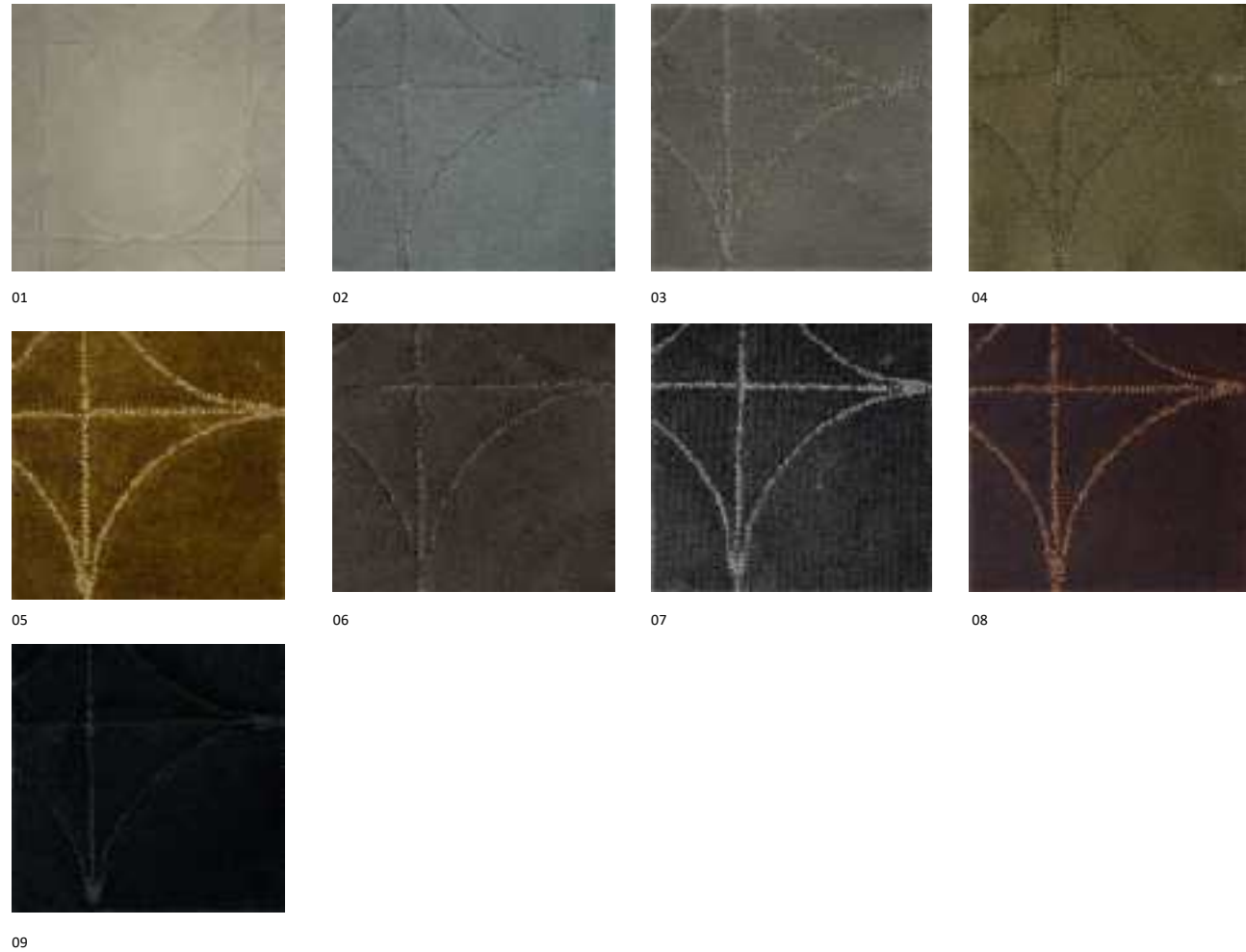
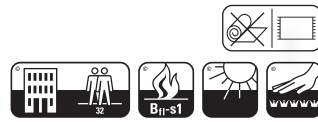
<b>General information</b>	This quality is made of jute. These fibers are very natural, soft and durable. Also this quality is pet-friendly and easily to clean.
<b>Additional prices</b>	For special shape the surcharge is 20% of the rug.
<b>Maintenance</b>	Vacuum the rug regularly to remove dust, dirt and debris. These rugs also shed some fibers which leaves dust under the rug. In a week or two, vacuum both sides of the rug as well as under the rug to keep any jute dust from collecting. Always keep your rug dry. When the atmosphere in your house is too humid, the rug may lose some of its durability. Moisture also makes jute susceptible to mold and mildew. If water must be applied to the rug, make sure to vacuum your rug first.  To remove a spot or spill, press the area with a white cloth or paper towel from the outside of the stain to the inside to prevent it from spreading. Blot the spill until there's no moisture left to stain the cloth or paper.
<b>Colour</b>	Because of the nature of the quality each rug has its unique colour. The colour may differ and depend on each dye bath. <b>Always avoid sunlight.</b> Longer periods of exposure to direct sunlight will damage the rug and lead to discolouring.
<b>Colour fastness</b>	4 or above (scale 1-5) [very good]
<b>Size deviation</b>	Size deviations are up to about 3% possible. Because of the nature of this quality, this product can stretch a little bit. This means sizes can vary +/- 5-10 cm in size.
<b>Anti-slip</b>	Anti-slip is available separately in two different fixed sizes, as a roll for installation or fitted custom made to the carpet. See <a href="#">page 7</a> of this lookbook for all options we offer.





# BALANCE

<b>Width</b>	Custom (min. order 4 m <sup>2</sup> )
<b>Pile height</b>	12/14 mm (including backing)
<b>Material</b>	100% Recycled nylon
<b>Quality</b>	Robotufted
<b>Weight per M2</b>	3,7kg
<b>Price m<sup>2</sup> incl. VAT</b>	On request
<b>Number of colourcombinations</b>	9
<b>Delivery time (approx.)</b>	Ca. 8 weeks



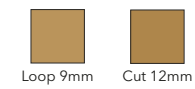
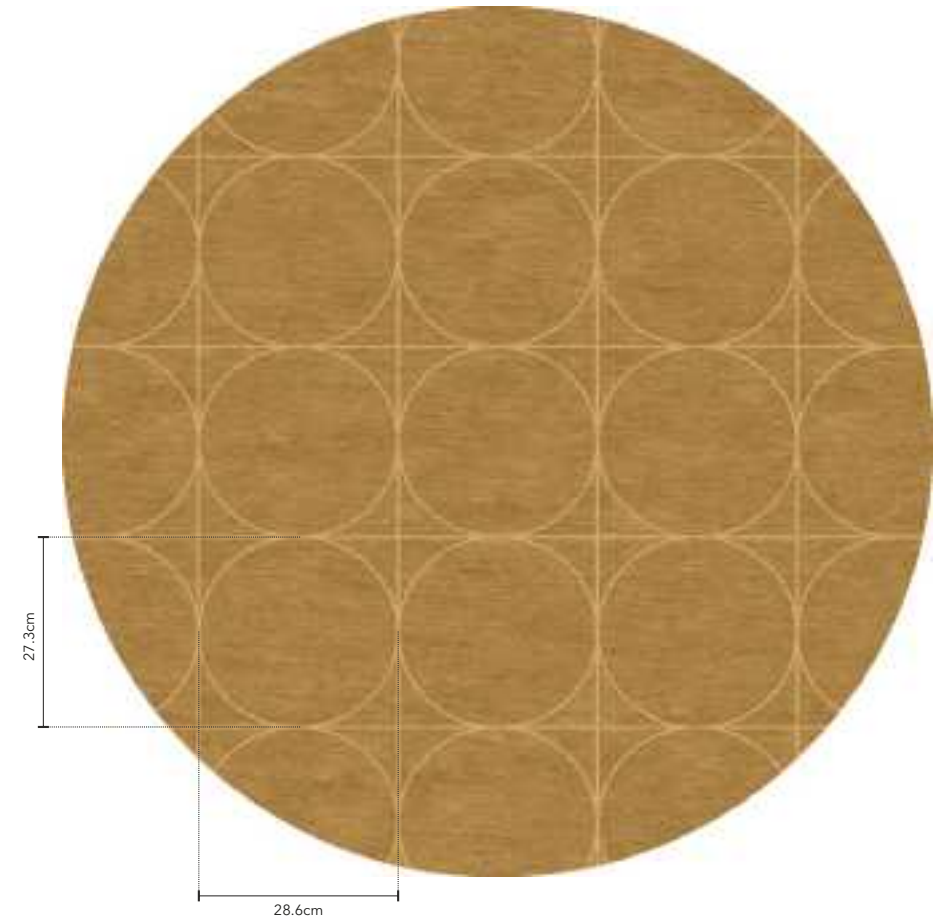
## PRODUCT INFORMATION

<b>General information</b>	This collection has a high resistance to light and low deviation in colour between lots.
<b>Maintenance</b>	Regenerated Nylon rugs have specific features and one of them is having high resistance to light and low deviation in colour between lots. Another particularity is the easy maintenance required by these fibers. It is very important to vacuum the rugs often, in order to clean it and also to recover the pile, which might present some height differences due to high people traffic and wear. Vacuuming the rugs not only cleans it but it also helps to recover the pile and improve the quality of the rug.
<b>Colour</b>	Always avoid direct sunlight. Longer periods of exposure to direct sunlight will damage the rug and lead to discolouring.
<b>Colour fastness</b>	8 [very good]
<b>Fire classification</b>	Fire classification: Bfl-s1 certified
<b>Size deviation</b>	Size deviations are up to about 3% possible. Because of the nature of this quality, this product can stretch a little bit.
<b>Backing</b>	The backing is made of polyester. Since it is used for the back side of the rugs there is no flame danger for backing as well. Polyester is a petroleum based material. This is as maximum eco-friendly as other petroleum based materials.

# BALANCE DESIGN

Below example shows the Balance 05 design of a rug with a size of 125 cm ROUND.

NOTE: In case you are ready to order and if you want to double-check your design with our production, please note this to your purchase order.







## BALMONT

<b>SIZE (M)</b>	400 cm width
<b>Pile height</b>	7 mm (including backing)
<b>Material</b>	100% Wool
<b>Quality</b>	Handloom
<b>Price m<sup>2</sup> incl. VAT</b>	On request (NOTE: calculate m <sup>2</sup> as 400 cm width)
<b>Number of colourcombinations</b>	5
<b>Delivery time (approx.)</b>	4-6 weeks



01



02



03



04



05

### PRODUCT INFORMATION

#### Maintenance

Wool, prized for its strength, crease-resistant properties, and natural water repellency, is an ideal material for rugs. To ensure your Wool rug remains in top condition for many years, it's important to follow these care instructions:

**Regular Vacuuming:** Keep your Wool rug clean by vacuuming it regularly. Use a vacuum cleaner with a beater brush or a soft brush attachment to gently lift and clean the wool fibers, maintaining the rug's softness and texture.

**Stain Management:** Act quickly when spills or stains occur on the rug. Blot the area gently with a clean cloth or paper towel to absorb excess moisture. Employ a mild cleaning solution designed for wool and follow the manufacturer's guidelines for treating stains.

**Rotation for Even Wear:** To ensure even wear, rotate the rug periodically, especially if it's placed in high-traffic areas. This practice helps preserve the rug's appearance and extends its lifespan.

**Protection from Sun:** Protect your rug from prolonged exposure to direct sunlight, as it can lead to fading. Position the rug in an area shielded from intense sunlight or use curtains or blinds to minimize UV exposure.

#### Additional prices

For special shape the surcharge is 20% of the rug.  
Blind finish: surcharge (on request) incl. VAT per stretching meter.

#### Size deviation

Because of the nature of the skin size deviations are up to about 3% possible.  
This product can stretch a little bit.

#### Colour

Because of the nature of the quality each rug has its unique colour. The colour may differ and depend on each dye bath. Always avoid direct sunlight. Longer periods of exposure to direct sunlight will damage the rug and lead to discolouring.

#### Backing

Primary backing: Action Backing, Secondary backing: Cotton Cloth

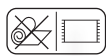
#### Extra information

Please do not store rolls packed longer than 3-4 weeks.





# BLOCKS/PATTERN



**Width** Custom  
**Pile height** 17 mm  
**Material** 100% Sheep FUR  
**Quality** Handmade  
**Price m<sup>2</sup> incl. VAT** On request (20x20 cm & Pattern), On request (40x40 cm)  
**Number of colours** 18  
**Delivery time (approx.):** 12-14 weeks



PATTERN - 100% Sheep FUR - colour K-57

Interior by: JANEY BUTLER INTERIORS BEDROOM





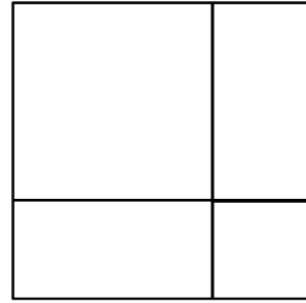
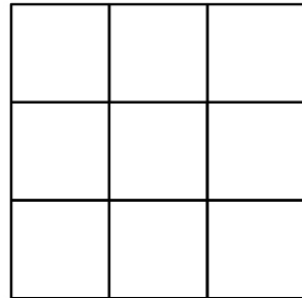
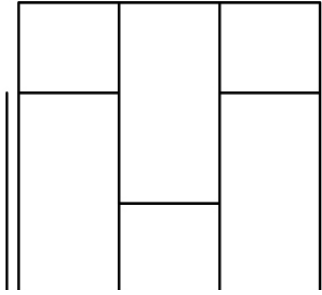
## PATTERN SHAPE

## BLOCKS SHAPE

NOTE: Sizes of the pattern is approx. 40/60 x 20 cm  
This can vary per piece, because of the nature of the skin

20 x 20 cm blocks

40 x 40 cm blocks



## PRODUCT INFORMATION

<b>Maintenance</b>	Sheep FUR can have pressure points after it has rolled up for a while. This can be easily removed by vacuuming it regularly or combing it in combination with a hair dryer remotely from a distance. The pressure points will go out after a while the carpet is "breathing".
<b>Size deviation</b>	Because of the nature of the skin size deviations are up to about 3% possible. This product can stretch a little bit.
<b>Colour</b>	Because of the nature of the quality each rug has its unique colour. The colour may differ and depend on each dye bath. Always avoid direct sunlight. Longer periods of exposure to direct sunlight will damage the rug and lead to discolouring.
<b>Fire classification</b>	Since the sheep FUR collection is made of real natural FUR it is pretty resistant against flame. This has no flame retardant classification.
<b>Colour fastness</b>	<b>We highly suggest to use these carpets where there is no sunlight since they may fade under sunlight. Always avoid sunlight.</b> Longer periods of exposure to direct sunlight will damage the rug and lead to discolouring.
<b>Backing</b>	The backing is made of polyester. Since it is used for the back side of the rugs there is no flame danger for backing as well. Polyester is a petroleum based material. This is as maximum eco-friendly as other petroleum based materials.
<b>Anti-slip</b>	Anti-slip is available separately in two different fixed sizes, as a roll for installation or fitted custom made to the carpet. <a href="#">See page 7</a> of this lookbook for all options we offer.
<b>Extra information</b>	Please do not store rolls packed longer than 3-4 weeks.



PATTERN - 100% Sheep FUR - colour K-01

Interior by: Indivipro





# BOSTON

<b>SIZE (M)</b>	Custom (min. order 4 m <sup>2</sup> )
<b>Pile height</b>	12,14,16,18,28,34,45 mm
<b>Material</b>	100% eucalyptus
<b>Quality</b>	Handtufted
<b>Weight per M2</b>	5 kg
<b>Price m<sup>2</sup> incl. VAT</b>	12,14,16,18mm: On request / 28,34mm: On request / 45mm: On request
<b>Number of colourcombinations</b>	12
<b>Delivery time (approx.)</b>	Ca. 8 weeks



01



02



03



04



05



06



07



08



09



10



11



11

## PRODUCT INFORMATION

<b>General information</b>	Eucalyptus is not resilient and will become flat over time. Loose loops can occur in the beginning. Eucalyptus is made of cellulose and does not tolerate water.
<b>Maintenance</b>	Eucalyptus rugs have some specific features. One of them is the different colour that it presents, especially when it is a plain rug. Along the surface of the rug, slight variations of colour occur (similar to what occurs with velvet), which gives a different effect which becomes more evident in lighter rugs. This does not constitute a defect; this is simply a characteristic of these cellulosic raw materials. During the first months it is normal that pilling may occur. This is not a manufacturing defect; it is another common characteristic of this type of fibers. The quantity of pilling will start diminishing after some weeks of use and it does not affect in any aspect the rug's resistance, aspect and quality. It is very important to vacuum the rugs often, in order to clean it and also to recover the pile, which might present some height differences due to high people traffic and wear.
<b>Colour</b>	The fibers are products of nature and as with all natural products, a slight deviation in texture and colour may occur between dye lots. Always avoid direct sunlight. Longer periods of exposure to direct sunlight will damage the rug and lead to discolouring.
<b>Size deviation</b>	Size deviations are up to about 3% possible. Because of the nature of this quality, this product can stretch a little bit.
<b>Extra information</b>	Please do not store rolls packed longer than 3-4 weeks



- 100% eucalytus - colour 11







# BUKIT



<b>Width</b>	400 cm
<b>Pile height</b>	Ca. 34 mm
<b>Material</b>	100% Polyester handwoven
<b>Quality</b>	Handwoven
<b>Price m<sup>2</sup> incl. VAT</b>	On request (NOTE: calculate m <sup>2</sup> as 400 cm width)
<b>Number of colours</b>	12
<b>Delivery time (approx.):</b>	4-6 weeks



BUKIT 01



BUKIT 02



BUKIT 03



BUKIT 04



BUKIT 05



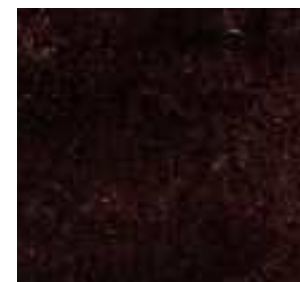
BUKIT 06



BUKIT 07



BUKIT 08



BUKIT 09 (Aubergine)



BUKIT 010 (Midnight blue)



BUKIT 011 (Turquoise)



BUKIT 012 (Gold)

## PRODUCT INFORMATION

### General information

This is a handwoven rug collection made of polyester. There may be unevenness occur. This is a property of a handwoven process. These irregularities can be carefully cut with scissors to become.

Avoid direct sunlight. Although polyester will not naturally fade in colour, exposure to strong sunlight will cause it.

### Additional prices

Blindfinish: (on request) per stretching meter  
For special shape the surcharge is 20% of the rug.

### Maintenance

To maintain the appearance of the rug, it is recommended to vacuum regularly. Because every household is different, the frequency of vacuuming must be based on the number of people living in your house. For example: four people living in a household = vacuuming at least four times a week, especially in areas with high traffic.

Use furniture glides to change furnitures direction or location to prevent permanent indentations from forming.

Remove stains immediately and if problems with stains occur we advise to contact a professional carpet cleaner.

### Size deviation

Size deviations are up to about 3% possible.

### Anti-slip

Anti-slip is available separately in two different fixed sizes, as a roll for installation or fitted custom made to the carpet. See [page 7](#) of this lookbook for all options we offer.







BUKIT - 100% Polyester - colour 07

Interior by: Maison Manon



BUKIT - 100% Polyester - colour 08



<b>SIZE (M)</b>	custom
<b>Pile height</b>	15 mm (including backing)
<b>Material</b>	80% wool, 20% jute
<b>Quality</b>	Handmade
<b>Price m<sup>2</sup> incl. VAT</b>	On request / Round: On request
<b>Number of colourcombinations</b>	4
<b>Delivery time (approx.)</b>	10-12 weeks



01



02



03



04

## PRODUCT INFORMATION

### General information

This is a handstitched rug collection made of wool.  
The jute core of the rug gives this product more stable lying property.

### Maintenance

You can easily use a vacuum cleaner for the wool- and synthetic fiber rugs.  
We advise to turn the wool rug 3 to 4 times a year to change the direction of the rug.  
The pierced wool fibers on the back of the rug should be carefully cut with scissors.  
Lay the rug in the snow in winter and beat well.

Remove stains with regular soap or with a special wool detergent. Repeat this procedure if necessary.  
For stronger contamination: have the rug professionally cleaned. If this is not possible, try to dry clean.

### Size deviation

Size deviations are up to about 3% possible. Because of the nature of this quality, this product can stretch a little bit.

### Finish

Standard are these rugs produced without fringes, but this is possible when noting this to your order.  
The finish of these rugs is standard on the short sides of the rug.  
Fringes are approx. 15 cm.  
The calculation for these fringes will be extra calculated on top of the ordered m<sup>2</sup> size.

### Anti-slip

Anti-slip is standard attached to the back of the rug (without surcharge).

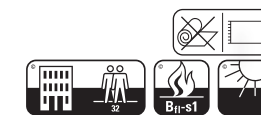






## CHECKS

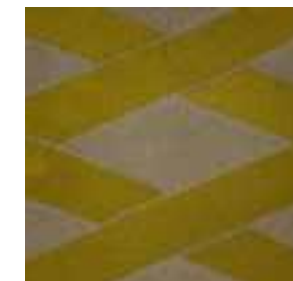
<b>SIZE (M)</b>	Custom (min. order 4 m <sup>2</sup> )
<b>Pile height</b>	14 mm (including backing)
<b>Material</b>	100% New Zealand wool
<b>Quality</b>	Robotufted
<b>Weight per M2</b>	4,5kg
<b>Price m<sup>2</sup> incl. VAT</b>	On request
<b>Number of colourcombinations</b>	6
<b>Delivery time (approx.)</b>	Ca. 8 weeks



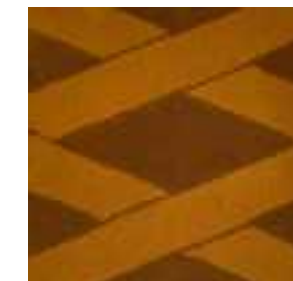
01



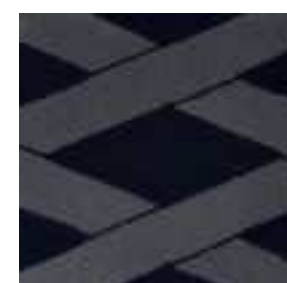
02



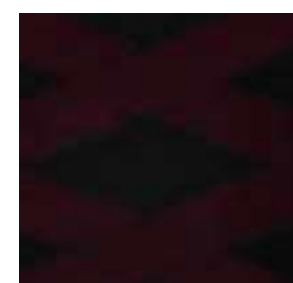
03



04

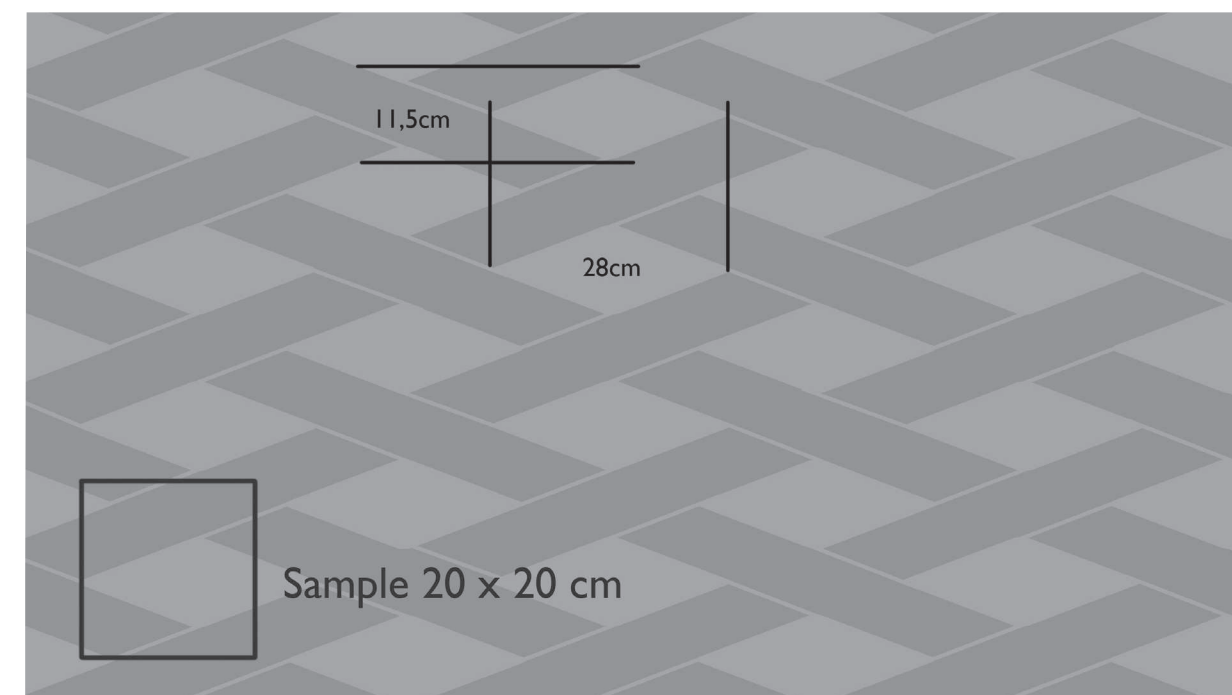


05



06

**NOTE:** Check the product details of this product at page 91



^ Design example





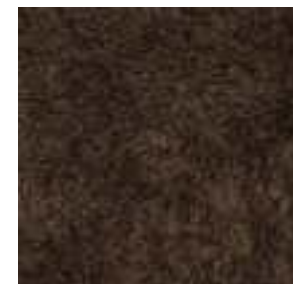


CLOUD - 80% New Zealand Wool, 20 Linen - 01

Interior by: Linteloo

## CLOUD

<b>SIZE (M)</b>	Custom (min. order 4 m <sup>2</sup> )
<b>Pile height</b>	45 mm (including backing)
<b>Material</b>	80% New Zealand wool, 20% linen
<b>Quality</b>	Robotufted
<b>Weight per M2</b>	4,5kg
<b>Price m<sup>2</sup> incl. VAT</b>	On request
<b>Number of colourcombinations</b>	6
<b>Delivery time (approx.)</b>	Ca. 8 weeks



01



02



03



04



05

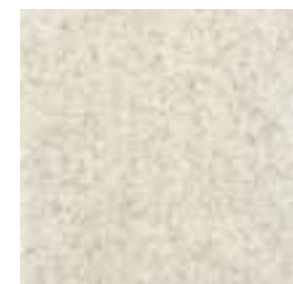


06

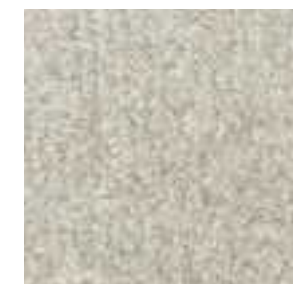
**NOTE:** Check the product details of this product at page 29 (Lie Down)

## CUBA

<b>SIZE (M)</b>	custom
<b>Pile height</b>	20 mm (including backing)
<b>Material</b>	70% wool, 30% jute
<b>Quality</b>	Handmade
<b>Price m<sup>2</sup> incl. VAT</b>	On request / Round: On request
<b>Number of colourcombinations</b>	3
<b>Delivery time (approx.)</b>	8-10 weeks



01



02



03

\*Anti-slip is separately standard delivered (without surcharge)

**NOTE:** Check the product details of this product at page 56 (Calama)

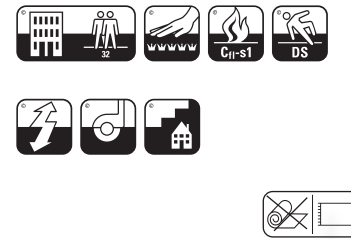






## DAVID

<b>Width</b>	400/500 cm
<b>Pile height</b>	9/10 mm
<b>Material</b>	100% Polyamide 6.0 Shiny nylon
<b>Quality</b>	Handwoven
<b>Dyeing Method</b>	Piece dyed
<b>Weight per M2</b>	2,4kg
<b>Price m<sup>2</sup> incl. VAT</b>	On request
<b>Price str. mtr. incl. VAT</b>	On request (400 cm width) / On request (500 cm width)
<b>Number of colours</b>	8
<b>Delivery time (approx.):</b>	4-6 weeks



DB 001



DB 002



DB 003



DB 004



DB 005



DB 006



DB 007



DB 008

### PRODUCT INFORMATION

<b>Material</b>	DAVID is made of 100% Polyamide 6.0 Shiny Nylon. Polyamide is strong, tear-resistant, wrinkle-resistant, retains its shape, and dries very quickly. It is elastic and water repellent.
<b>Maintenance</b>	Regular vacuuming will ensure years of enjoyment from this carpet.
<b>Additional prices</b>	For special shape the surcharge is 20% of the rug. Blind finish: surcharge (on request) per stretching meter.
<b>Size deviation</b>	Because of the nature of the skin size deviations are up to about 3% possible. This product can stretch a little bit.
<b>Colour</b>	Because of the nature of the quality each rug has its unique colour. The colour may differ and depend on each dye bath. Always avoid direct sunlight. Longer periods of exposure to direct sunlight will damage the rug and lead to discolouring.
<b>Fire classification</b>	Cfl-S1
<b>Backing</b>	Primary backing: Action Backing, Secondary backing: Cotton Cloth
<b>Extra information</b>	Please do not store rolls packed longer than 3-4 weeks.

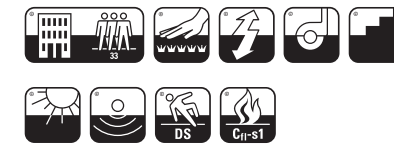




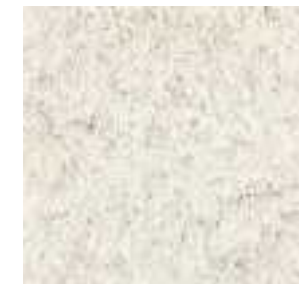


# DYBA

<b>SIZE (M)</b>	400 cm
<b>Pile height</b>	40 mm (including backing)
<b>Material</b>	70% New Zealand wool, 30% Polyester
<b>Quality</b>	Table-tufted
<b>Price m<sup>2</sup> incl. VAT</b>	On request (NOTE: calculate m <sup>2</sup> as 400 cm width)
<b>Number of colourcombinations</b>	5
<b>Delivery time (approx.)</b>	4-6 weeks



01



02



03



04



05



06

## PRODUCT INFORMATION

### Maintenance

New Zealand wool, prized for its strength, crease-resistant properties, and natural water repellency, is an ideal material for rugs. To ensure your New Zealand wool rug remains in top condition for many years, it's important to follow these care instructions:

**Regular Vacuuming:** Keep your New Zealand wool rug clean by vacuuming it regularly. Use a vacuum cleaner with a beater brush or a soft brush attachment to gently lift and clean the wool fibers, maintaining the rug's softness and texture.

**Stain Management:** Act quickly when spills or stains occur on the rug. Blot the area gently with a clean cloth or paper towel to absorb excess moisture. Employ a mild cleaning solution designed for wool and follow the manufacturer's guidelines for treating stains.

**Rotation for Even Wear:** To ensure even wear, rotate the rug periodically, especially if it's placed in high-traffic areas. This practice helps preserve the rug's appearance and extends its lifespan.

**Protection from Sun:** Protect your rug from prolonged exposure to direct sunlight, as it can lead to fading. Position the rug in an area shielded from intense sunlight or use curtains or blinds to minimize UV exposure.

### Additional prices

For special shape the surcharge is 20% of the rug.  
Blind finish: surcharge (on request) per stretching meter.

### Size deviation

Because of the nature of the skin size deviations are up to about 3% possible. This product can stretch a little bit.

### Colour

Because of the nature of the quality each rug has its unique colour. The colour may differ and depend on each dye bath. Always avoid direct sunlight. Longer periods of exposure to direct sunlight will damage the rug and lead to discolouring.

### Backing

Primary backing: Action Backing, Secondary backing: Cotton Cloth or Felt

### Extra information

Please do not store rolls packed longer than 3-4 weeks.

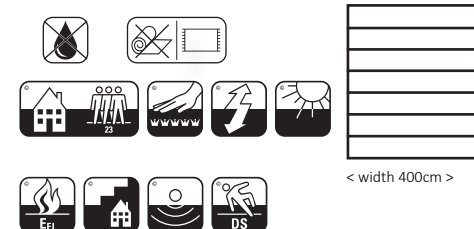






## EMOTION

<b>Width</b>	400 cm
<b>Pile height</b>	9 mm
<b>Material</b>	100% Viscose antique look
<b>Quality</b>	Handwoven
<b>Price m<sup>2</sup> incl. VAT</b>	On request (NOTE: calculate m <sup>2</sup> as 400 cm width)
<b>Number of colours</b>	6
<b>Delivery time (approx.):</b>	4-6 weeks



IEM 001



IEM 003



IEM 004



IEM 005



IEM 006



IEM 007

## PRODUCT INFORMATION

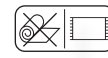
<b>General information</b>	Viscose is not resilient and will become flat over time. Loose loops can occur in the beginning.
<b>Additional prices</b>	Blind finish: surcharge (on request) per stretching meter. For special shape the surcharge is 20% of the rug.
<b>Maintenance</b>	Viscose is made of cellulose and does not tolerate water or any other liquid. These substances may cause permanent staining. We therefore recommend to remove stains immediately with absorbent kitchen paper or a white towel.  Maintain by regularly vacuuming.
<b>Colour</b>	Because of the nature of the quality each rug has its unique colour. The colour may differ and depend on each dye bath. Always avoid direct sunlight. Longer periods of exposure to direct sunlight will damage the rug and lead to discolouring.
<b>Size deviation</b>	Size deviations are up to about 3% possible. Because of the nature of this quality, this product can stretch a little bit.
<b>Extra information</b>	Please do not store rolls packed longer than 3-4 weeks.
<b>Anti-slip</b>	Anti-slip is available separately in two different fixed sizes, as a roll for installation or fitted custom made to the carpet. See <a href="#">page 7</a> of this lookbook for all options we offer.



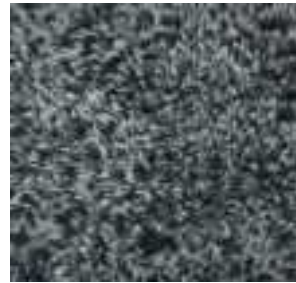


# FAUX FUR

**Width** Custom  
**Pile height** 24 mm  
**Material** 100% Faux FUR  
**Quality** Handmade  
**Price m<sup>2</sup> incl. VAT** On request  
**Number of colours** 5  
**Delivery time (approx.):** 12-14 weeks



BEIGE



GREY



SILVER



STONE



WHITE

## PRODUCT INFORMATION

**Maintenance** This Faux FUR collection is made of polyester yarns, which makes it a very strong quality.  
**Size deviation** Size deviations are up to about 3% possible and this product can stretch a little bit.  
**Additional prices** For special shape the surcharge is 20% of the rug.  
**Colour fastness** Since this product is made of polyester, it is pretty resistant against sunlight. Fade in colour is very minimal.  
**Backing** The backing is made of cotton cloth.  
**Anti-slip** Anti-slip is available separately in two different fixed sizes, as a roll for installation or fitted custom made to the carpet. See [page 7](#) of this lookbook for all options we offer.



# FLORIDA

**Width** Custom (min. order 4 m<sup>2</sup>)  
**Pile height** 18,28,34 mm pile (including backing)  
**Material** 100% bamboo  
**Quality** Robotufted  
**Weight per M2** 5,5kg  
**Price m<sup>2</sup> incl. VAT** 18mm: On request / 28,34 mm: On request  
**Number of colours** 13  
**Delivery time (approx.)** Ca. 8 weeks



01



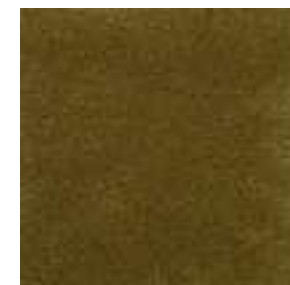
02



03



04



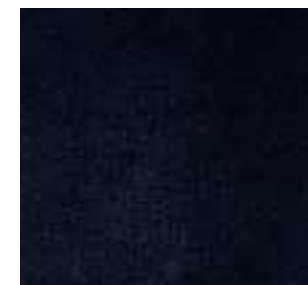
05



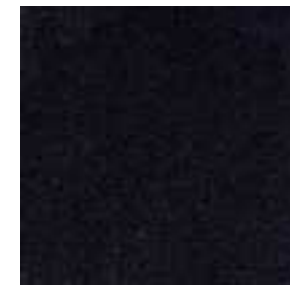
06



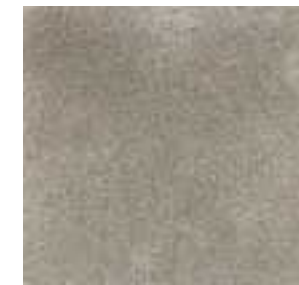
07



08



09



10



11



12



13

**NOTE:** Check the product details of this product at page 89

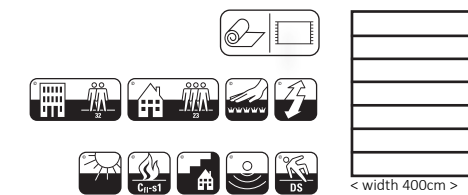






# JAMES

**Width** 400 cm  
**Pile height** 8 mm  
**Material** 100% Polyamide Shiny nylon  
**Quality** Handwoven  
**Dyeing Method** Piece dyed  
**Weight per M2** 2,4kg  
**Price m<sup>2</sup> incl. VAT** On request (NOTE: calculate m<sup>2</sup> as 400 width)  
**Number of colours** 8  
**Delivery time (approx.):** 4-6 weeks



## PRODUCT INFORMATION

**Material** JAMES is made of 100% Polyamide Shiny Nylon. Polyamide is strong, tear-resistant, wrinkle-resistant, retains its shape, and dries very quickly. It is elastic and water repellent.

**Maintenance** Regular vacuuming will ensure years of enjoyment from this carpet.

**Additional prices** For special shape the surcharge is 20% of the rug.  
 Blind finish: surcharge (on request) per stretching meter.

**Size deviation** Because of the nature of the skin size deviations are up to about 3% possible.  
 This product can stretch a little bit.

**Colour** Because of the nature of the quality each rug has its unique colour. The colour may differ and depend on each dye bath. Always avoid direct sunlight. Longer periods of exposure to direct sunlight will damage the rug and lead to discolouring.

**Fire classification** Cfl-S1

**Backing** Primary backing: Action Backing, Secondary backing: Cotton Cloth

**Extra information** Please do not store rolls packed longer than 3-4 weeks.







LA PAZ - 80% Wool, 20% Jute

## LA PAZ

<b>Width</b>	Custom
<b>Pile height</b>	10 mm
<b>Material</b>	80% wool, 20% jute
<b>Quality</b>	handmade
<b>Price m<sup>2</sup> incl. VAT</b>	On request / Round: On request
<b>Number of colours</b>	4
<b>Delivery time (approx.):</b>	8-10 weeks



Standard:  
Blind finish  
colouring



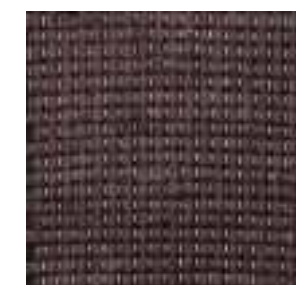
Alternative:  
jute blind finish  
/ other colour



LA PAZ JST 1



LA PAZ JST 3



LA PAZ JST 4



LA PAZ JST 33

\* THESE QUALITIES ARE NOT AVAILABLE FOR GERMANY

## PRODUCT INFORMATION

<b>General information</b>	This is a handstitched rug collection made of wool. The jute core of the rug gives this product more stable lying property.
<b>Maintenance</b>	You can easily use a vacuum cleaner for the wool- and synthetic fiber rugs. We advise to turn the wool rug 3 to 4 times a year to change the direction of the rug. The pierced wool fibers on the back of the rug should be carefully cut with scissors. Lay the rug in the snow in winter and beat well.  Remove stains with regular soap or with a special wool detergent. Repeat this procedure if necessary. For stronger contamination: have the rug professionally cleaned. If this is not possible, try to dry clean.
<b>Size deviation</b>	Size deviations are up to about 3% possible. Because of the nature of this quality, this product can stretch a little bit.
<b>Finish</b>	Standard are these rugs produced without fringes, but this is possible when noting this to your order. The finish of these rugs is standard on the short sides of the rug. Fringes are approx. 15 cm. The calculation for these fringes will be extra calculated on top of the ordered m <sup>2</sup> size.
<b>Anti-slip</b>	Anti-slip is standard attached to the back of the rug (without surcharge).

## MAIN

<b>SIZE (M)</b>	Custom (min. order 4 m <sup>2</sup> )
<b>Pile height</b>	12, 18, 28, 34, 45 mm (including backing)
<b>Material</b>	100% contract botanical silk
<b>Quality</b>	Robotufted
<b>Weight per M2</b>	3,5kg
<b>Price m<sup>2</sup> incl. VAT</b>	12, 18 mm: On request / 28, 38mm: On request / 45mm: On request
<b>Number of colourcombinations</b>	2
<b>Delivery time (approx.)</b>	Ca. 8 weeks



01



02

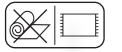
**NOTE:** Check the product details of this product at page 50





# MONTREAL

<b>SIZE (M)</b>	Custom (min. order 4 m <sup>2</sup> )
<b>Pile height</b>	14, 16, 18 mm (including backing)
<b>Material</b>	100% merino wool
<b>Quality</b>	Robotufted
<b>Weight per M2</b>	3,5kg
<b>Price m<sup>2</sup> incl. VAT</b>	On request
<b>Number of colour combinations</b>	5
<b>Delivery time (approx.)</b>	Ca. 8 weeks



01



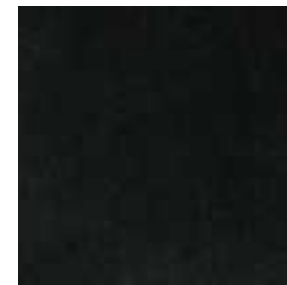
02



03



04



05

## PRODUCT INFORMATION

### Maintenance

During the first months, it is normal that pilling may occur. This is not a manufacturing defect; it is another common characteristic of this type of fibers. The quantity of pilling will start diminishing after some weeks of use and it does not affect in any aspect the rug's resistance, aspect, and quality. It is very important to vacuum the rugs often, in order to clean it and also to recover the pile, which might present some height differences due to high people traffic and wear. Regular cleaning is essential to maintain the appearance of your rug. Use a good vacuum cleaner, which should have 1200W of power and vacuum in the direction of the pile. Merino Wool rugs must be cleaned regularly. Naturally, lighter rugs need to be cleaned more often than darker ones. Steam cleaning or any other methods which involve a substantial increase of temperature are not recommended. For Merino Wool rugs, we recommend water cleaning (water temperature cannot be higher than 30°). For a deeper cleaning, please use a specialized rug cleaning company.

### Additional prices

For special shape the surcharge is 20% of the rug.

### Size deviation

Because of the nature of the skin size deviations are up to about 3% possible. This product can stretch a little bit.

### Colour

Because of the nature of the quality each rug has its unique colour. The colour may differ and depend on each dye bath. Always avoid direct sunlight. Longer periods of exposure to direct sunlight will damage the rug and lead to discolouring.

### Backing

100% Polyester

### Extra information

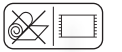
Please do not store rolls packed longer than 3-4 weeks.







## NATAL



<b>Width</b>	max. 380 cm
<b>Pile height</b>	8 mm
<b>Material</b>	55% wool, 15% linen, 30% jute
<b>Quality</b>	Handmade
<b>Price m<sup>2</sup> incl. VAT</b>	On request
<b>Number of colours</b>	7
<b>Delivery time (approx.):</b>	10-12 weeks



JNA 1



JNA 3



JNA 5



JNA 7



JNA 12



JNA 18



JNA 19

\* THESE QUALITIES ARE NOT AVAILABLE FOR GERMANY

### PRODUCT INFORMATION

<b>General information</b>	This is a handstitched rug collection made of wool. The jute core of the rug gives this product more stable lying property.
<b>Maintenance</b>	You can easily use a vacuum cleaner for the wool- and synthetic fiber rugs. We advise to turn the wool rug 3 to 4 times a year to change the direction of the rug. The pierced wool fibers on the back of the rug should be carefully cut with scissors. Lay the rug in the snow in winter and beat well.  Remove stains with regular soap or with a special wool detergent. Repeat this procedure if necessary. For stronger contamination: have the rug professionally cleaned. If this is not possible, try to dry clean.
<b>Size deviation</b>	Size deviations are up to about 3% possible. Because of the nature of this quality, this product can stretch a little bit.
<b>Finish</b>	Standard are these rugs produced without fringes, but this is possible when noting this to your order. The finish of these rugs is standard on the short sides of the rug. Fringes are approx. 15 cm. The calculation for these fringes will be extra calculated on top of the ordered m <sup>2</sup> size.
<b>Anti-slip</b>	Anti-slip is standard attached to the back of the rug (without surcharge).





# OLIVER

**SIZE (M)** 400/500 mtr.  
**Pile height** 9-10 mm (including backing)  
**Material** 100% polyamide 6.0  
**Quality** Handwoven  
**Dyeing Method** Piece dyed  
**Weight per M2** 2,5kg  
**Price m<sup>2</sup> incl. VAT** On request (NOTE: calculate m<sup>2</sup> as 400/500 cm width)  
**Number of colourcombinations** 5  
**Delivery time (approx.)** 4-6 weeks



01

02

03

04



05

## PRODUCT INFORMATION

**Maintenance** Polyamide is strong, it does not tear, it does not crease, retains its shape, and dries very quickly. Regular vacuuming ensures that you will enjoy this rug for years.

**Additional prices** For special shape the surcharge is 20% of the rug.  
 Blind finish: surcharge (on request) per stretching meter.

**Size deviation** Because of the nature of the skin size deviations are up to about 3% possible.  
 This product can stretch a little bit.

**Colour** Because of the nature of the quality each rug has its unique colour. The colour may differ and depend on each dye bath. Always avoid direct sunlight. Longer periods of exposure to direct sunlight will damage the rug and lead to discolouring.

**Anti-slip** is available separately in two different fixed sizes, as a roll for installation or fitted custom made to the carpet.

**Backing** Primary Backing: Action backing, Secondary Backing: Cotton Cloth

**Extra information** Please do not store rolls packed longer than 3-4 weeks.

# PORTLAND

**SIZE (M)** Custom (min. order 4 m<sup>2</sup>)  
**Pile height** 12, 14, 16, 18, 28, 34, 45 mm (including backing)  
**Material** 100% recycled nylon  
**Quality** Robotufted  
**Weight per M2** 3,7kg  
**Price m<sup>2</sup> incl. VAT** 12,14,16mm: On request / 18,28,30,34,45 mm: On request  
**Number of colourcombinations** 6  
**Delivery time (approx.)** Ca. 8 weeks



01

02

03

04



05



06

## PRODUCT INFORMATION

**Maintenance** Recycled Nylon rugs have specific features including high resistance to light and low deviation in color between lots. They require easy maintenance. It is very important to vacuum the rugs often to clean it and recover the pile, which might present some height differences due to high people traffic and wear. Vacuuming not only cleans the rug but also helps to recover the pile and improve its quality. It is not advisable to use central vacuum or low power vacuums (it's recommended 1200W of power). It's also important to turn the rugs regularly to ensure even effects from light and normal wear throughout the surface. When furniture is placed on the rug, using rug protection can prevent damage to the pile and overall appearance of the product. Regular cleaning is essential to maintain the appearance of your rug. Naturally, lighter rugs need to be cleaned more often than darker ones. For Regenerated Nylon rugs, water cleaning is recommended if the water temperature isn't higher than 30°, with a neutral pH soap or detergent. Remove stains immediately, and if problems with stains occur, we advise contacting a professional carpet cleaner.

**Additional prices** For special shape the surcharge is 20% of the rug.

**Size deviation** Because of the nature of the skin size deviations are up to about 3% possible.  
 This product can stretch a little bit.

**Colour** Because of the nature of the quality each rug has its unique colour. The colour may differ and depend on each dye bath. Always avoid direct sunlight. Longer periods of exposure to direct sunlight will damage the rug and lead to discolouring.

**Colour fastness** 8 (very good)

**Backing** The backing is made of polyester, which poses no flame danger for backing as well. Polyester is a petroleum-based material and is as maximum eco-friendly as other petroleum-based materials.

**Extra information** Please do not store rolls packed longer than 3-4 weeks.

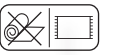






## SALVADOR

<b>Width</b>	Custom
<b>Pile height</b>	20 mm
<b>Material</b>	70% wool, 30% jute
<b>Quality</b>	Handmade
<b>Price m<sup>2</sup> incl. VAT</b>	On request / Round: On request
<b>Number of colours</b>	11
<b>Delivery time (approx.):</b>	8-10 weeks



JSAL 1



JSAL 2



JSAL 4



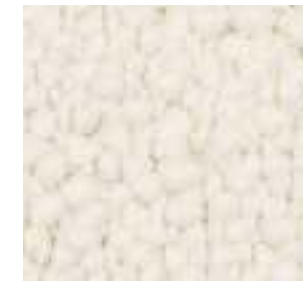
JSAL 5



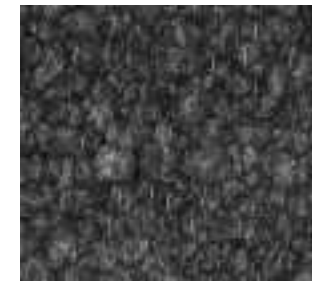
JSAL 6



JSAL 7



JSAL 8



JSAL 9



JSAL 10



JSAL 11



JSAL 12

### PRODUCT INFORMATION

#### General information

This is a handmade rug collection made of wool. The jute core of the rug gives this product more stable lying property.

#### Maintenance

You can easily use a vacuum cleaner for the wool- and synthetic fiber rugs. We advise to turn the wool rug 3 to 4 times a year to change the direction of the rug. The pierced wool fibers on the back of the rug should be carefully cut with scissors. Lay the rug in the snow in winter and beat well.

Remove stains with regular soap or with a special wool detergent. Repeat this procedure if necessary. For stronger contamination: have the rug professionally cleaned. If this is not possible, try to dry clean.

#### Size deviation

Size deviations are up to about 3% possible. Because of the nature of this quality, this product can stretch a little bit.

#### Finish

Standard are these rugs produced without fringes, but this is possible when noting this to your order. The finish of these rugs is standard on the short sides of the rug. Fringes are approx. 15 cm. The calculation for these fringes will be extra calculated on top of the ordered m<sup>2</sup> size.











## SAN JUAN

<b>SIZE (M)</b>	Custom
<b>Pile height</b>	25-30 mm
<b>Material</b>	100% wool
<b>Quality</b>	Handmade
<b>Price m<sup>2</sup> incl. VAT</b>	On request
<b>Number of colourcombinations</b>	3
<b>Delivery time (approx.)</b>	8-10 weeks



01



02



03

### PRODUCT INFORMATION

#### General information

This is a handmade rug collection made of wool.  
The jute core of the rug gives this product more stable lying property.

#### Maintenance

You can easily use a vacuum cleaner for the wool- and synthetic fiber rugs.  
We advise to turn the wool rug 3 to 4 times a year to change the direction of the rug.  
The pierced wool fibers on the back of the rug should be carefully cut with scissors.  
Lay the rug in the snow in winter and beat well.

Remove stains with regular soap or with a special wool detergent. Repeat this procedure if necessary.  
For stronger contamination: have the rug professionally cleaned. If this is not possible, try to dry clean.

#### Size deviation

Size deviations are up to about 3% possible. Because of the nature of this quality, this product can stretch a little bit.

#### Finish

Standard are these rugs produced without fringes, but this is possible when noting this to your order.  
The finish of these rugs is standard on the short sides of the rug.  
Fringes are approx. 15 cm.  
The calculation for these fringes will be extra calculated on top of the ordered m<sup>2</sup> size.

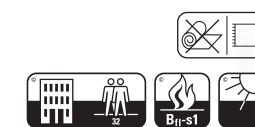






## SCARABEE

<b>SIZE (M)</b>	Custom (min. order 4 m <sup>2</sup> )
<b>Pile height</b>	14 mm (including backing)
<b>Material</b>	Eucalyptus/New Zealand Wool
<b>Quality</b>	Robotufted
<b>Price m<sup>2</sup> incl. VAT</b>	On request
<b>Number of colourcombinations</b>	5
<b>Delivery time (approx.)</b>	Ca. 8 weeks



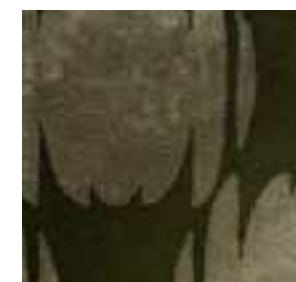
01



02



03

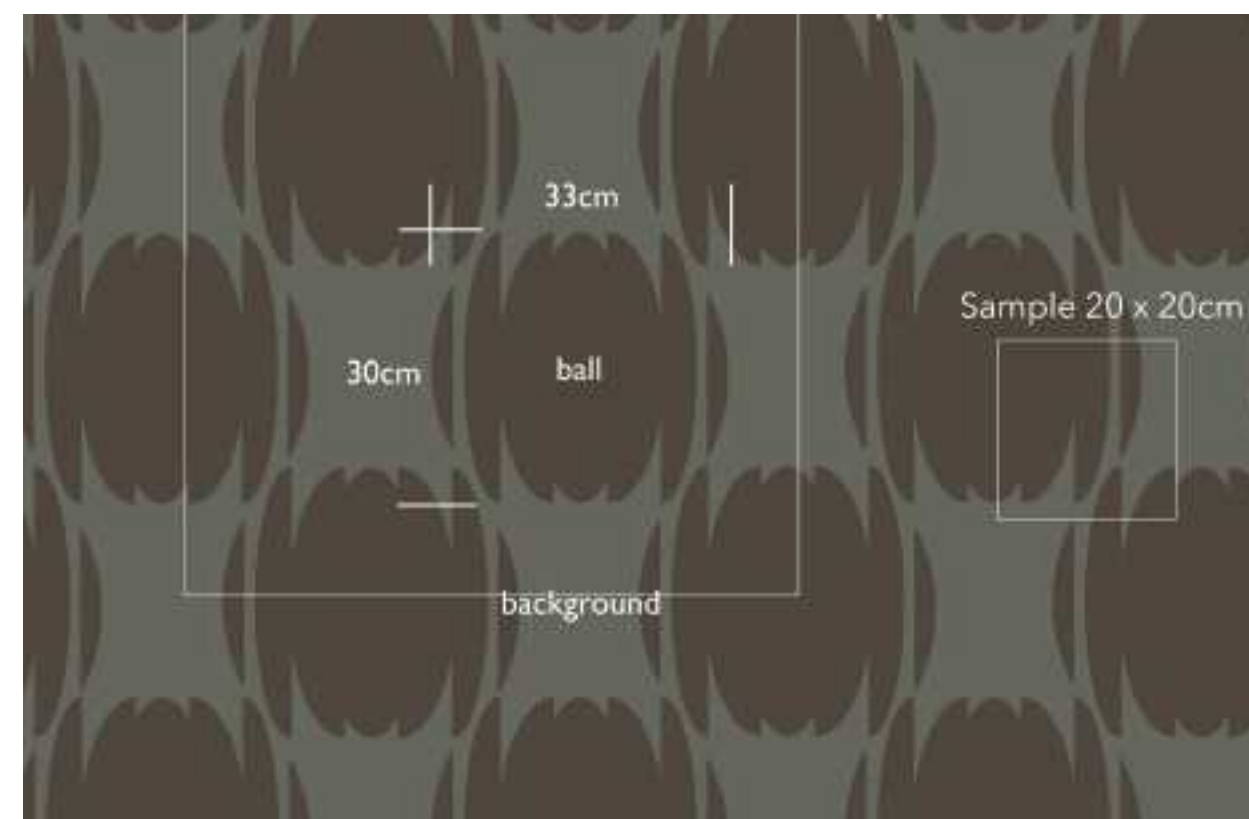


04



05

**NOTE:** Check the product details of this product at page 91



^ Design example





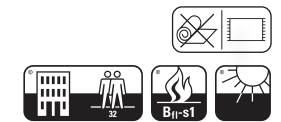


Tide - 50% wool/ 50% bamboo - Colour Pebble

@ Salon del mobile - Studio Piet Boon

## TIDE

<b>SIZE (M)</b>	Custom (min. order 4 m <sup>2</sup> )
<b>Pile height</b>	Ca. 34 mm (including backing)
<b>Material</b>	50% wool, 50% bamboo
<b>Quality</b>	Robotufted
<b>Weight per M2</b>	5kg
<b>Price m<sup>2</sup> incl. VAT</b>	On request
<b>Number of colours</b>	4
<b>Delivery time (approx.)</b>	Ca. 8 weeks



BONE



MIST



PEBBLE



TERRA

### PRODUCT INFORMATION

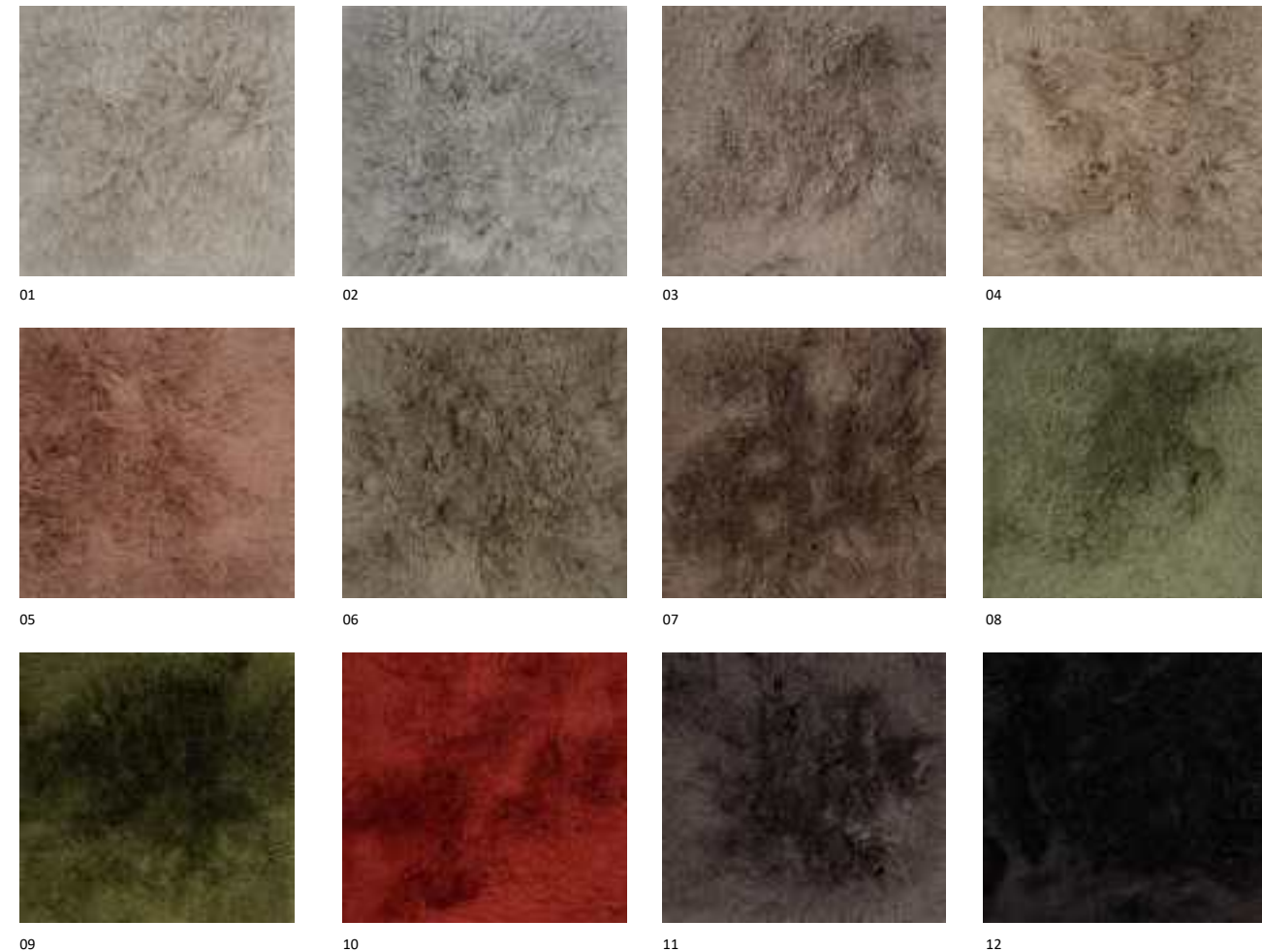
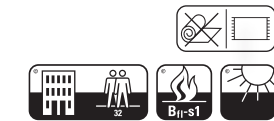
<b>General information</b>	This is a robotufted carpet collection available in Bamboo and Wool. This quality is good to clean.
<b>Additional prices</b>	For special shape the surcharge is 20% of the rug.
<b>Maintenance</b>	It's important that rugs are turned regularly, so that the effects caused by light and normal wear might be equivalent in the whole surface of the rug. When there is furniture placed on the rug exercising pressure, a rug protection can be used so it won't damage the pile and the overall look of the product. Regular cleaning is essential to maintain the appearance of your rug.
<b>Size deviation</b>	Size deviations are up to about 3% possible. Because of the nature of this quality, this product can stretch a little bit.
<b>Colour</b>	These fibers are products of nature and as with all natural products, a slight deviation in texture and colour may occur between dye lots. Always avoid direct sunlight. Longer periods of exposure to direct sunlight will damage the rug and lead to discolouring.
<b>Fire classification</b>	Fire classification - Cf1-s1
<b>Colour fastness</b>	Light 4-5 Water 4-5
<b>Backing</b>	100% Polyester
<b>Extra information</b>	Please do not store rolls packed longer than 3-4 weeks.
<b>Anti-slip</b>	Anti-slip is available separately in two different fixed sizes, as a roll for installation or fitted custom made to the carpet.





# TORONTO

<b>SIZE (M)</b>	Custom (min. order 4 m <sup>2</sup> )
<b>Pile height</b>	12,14,16,18,28,30,34,45 mm (including backing)
<b>Material</b>	100% New Zealand wool
<b>Quality</b>	Robotufted
<b>Weight per M2</b>	4,5kg
<b>Price m<sup>2</sup> incl. VAT</b>	12,14,16mm: On request / 18,28,30,34,45mm: On request
<b>Number of colourcombinations</b>	12
<b>Delivery time (approx.)</b>	Ca. 8 weeks



## PRODUCT INFORMATION

<b>General information</b>	The fibers are products of nature and as with all natural products, a slight deviation in texture and colour may occur between dye lots.
<b>Maintenance</b>	It's important to vacuum the rugs often, in order to clean it and also to recover the pile, which might present some height differences due to high people traffic and wear. It's also important that rugs are turned regularly, so that the effects caused by light and normal wear might be equivalent in the whole surface of the rug. When there is furniture placed on the rug exercising pressure, a rug protection can be used so it won't damage the pile and the overall look of the product. Regular cleaning is essential to maintain the appearance of your rug.
<b>Colour</b>	Because of the nature of the quality each rug has its unique colour. The colour may differ and depend on each dye bath. Always avoid direct sunlight. Longer periods of exposure to direct sunlight will damage the rug and lead to discolouring.
<b>Colour fastness</b>	4 or above (1- 5 scale). [very good]
<b>Size deviation</b>	Size deviations are up to about 3% possible. Because of the nature of this quality, this product can stretch a little bit.
<b>Backing</b>	The backing is made of polyester. Since it is used for the back side of the rugs there is no flame danger for backing as well. Polyester is a petroleum based material. This is as maximum eco-friendly as other petroleum based materials.
<b>Extra information</b>	Please do not store rolls packed longer than 3-4 weeks.

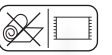






## ZAYN

<b>Width</b>	Custom 0-300 cm width	Custom 301-500 cm width	Standard 200 x 300 cm
<b>Pile height</b>	6 mm (Total height 15-16mm)		
<b>Material</b>	80% jute / 20% cotton		
<b>Quality</b>	Handknotted		
<b>Price m<sup>2</sup> incl. VAT</b>	On request	On request	On request
<b>Number of colours</b>	8		
<b>Delivery time (approx.):</b>	12-14 weeks		



NEL 001



NEL 002



NEL 004



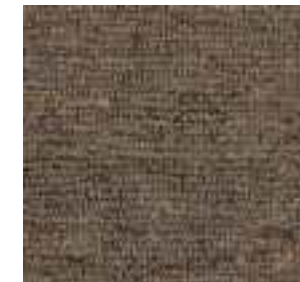
NEL 005



NEL 006



NEL 007



NEL 008



NEL 009

### PRODUCT INFORMATION

#### General information

This quality is made of jute with cotton and these fibers are very natural, soft and durable. Also this quality is pet-friendly and easily to clean.

#### Additional prices

For special shape the surcharge is 20% of the rug.

#### Maintenance

Vacuum the rug regularly to remove dust, dirt and debris. These rugs also shed some fibers which leaves dust under the rug. In a week or two, vacuum both sides of the rug as well as under the rug to keep any jute dust from collecting. Always keep your rug dry. When the atmosphere in your house is too humid, the rug may lose some of its durability. Moisture also makes jute susceptible to mold and mildew. If water must be applied to the rug, make sure to vacuum your rug first.

To remove a spot or spill, press the area with a white cloth or paper towel from the outside of the stain to the inside to prevent it from spreading. Blot the spill until there's no moisture left to stain the cloth or paper.

#### Colour

Because of the nature of the quality each rug has its unique colour. The colour may differ and depend on each dye bath. **Always avoid sunlight.** Longer periods of exposure to direct sunlight will damage the rug and lead to discolouring.

#### Colour fastness

4 or above (scale 1-5) [very good]

#### Size deviation

Size deviations are up to about 3% possible. Because of the nature of this quality, this product can stretch a little bit. This means sizes can vary +/- 5-10 cm in size.

#### Anti-slip

Anti-slip is available separately in two different fixed sizes, as a roll for installation or fitted custom made to the carpet. See [page 7](#) of this lookbook for all options we offer.

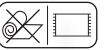




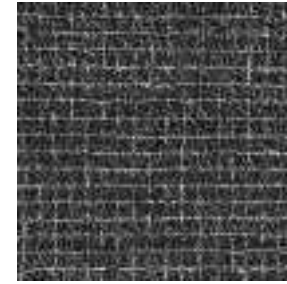


TAJ TREASURES  
COLLECTIONS





<b>Width</b>	Custom
<b>Pile height</b>	8 mm (including backing)
<b>Material</b>	60% New Zealand wool, 40% Viscose
<b>Quality</b>	Handtufted
<b>Price m<sup>2</sup> incl. VAT</b>	On request
<b>Number of colourcombinations</b>	3
<b>Delivery time (approx.)</b>	12-14 weeks



01



02



03

## PRODUCT INFORMATION

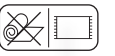
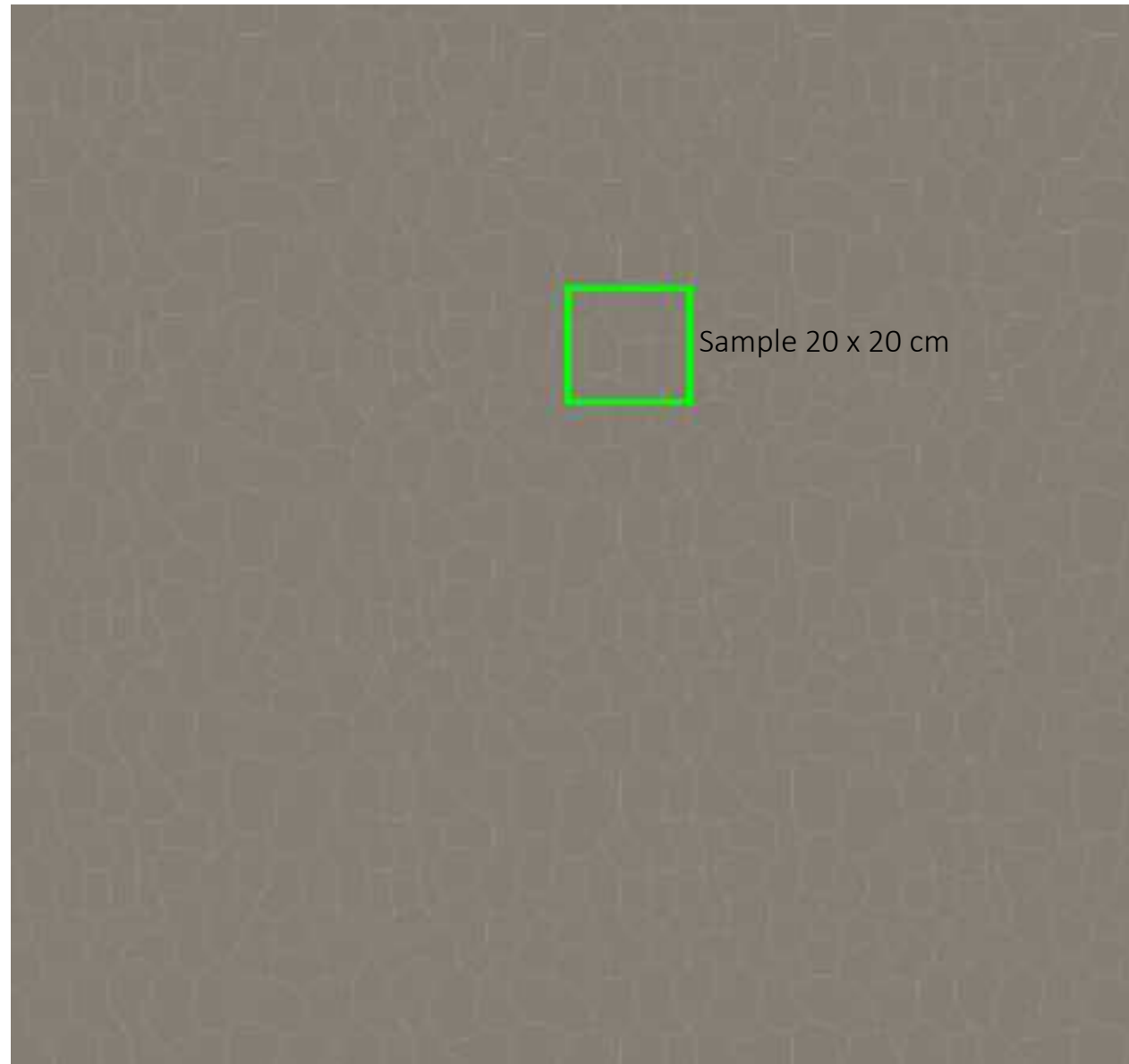
<b>General information</b>	Regular maintenance is essential to preserve the lifespan and appearance of a rug made from 60% New Zealand wool and 40% viscose.
<b>Maintenance</b>	Regular vacuuming is crucial to remove dust, dirt, and loose fibers. Use a vacuum with a soft brush to prevent fiber damage. Immediate treatment of stains is crucial to prevent them from penetrating the fibers. Blot excess moisture with a soft cloth or paper towel before gently treating the stain. Consider periodic professional cleaning to address deeper stains and general cleaning. Ensure the professional cleaner is informed of the rug's composition for appropriate cleaning methods. Regularly rotating the rug promotes even wear. Additionally, avoid prolonged exposure to direct sunlight to prevent discoloration and limit exposure to moisture. Do not place the rug on damp surfaces or expose it to prolonged damp conditions. Use of a suitable rug pad contributes to extending the rug's lifespan, improving stability, and reducing the risk of slipping. Avoid aggressive chemicals or cleaning agents that may be harmful to the fibers. By carefully following these maintenance tips, you can ensure that the rug made from 60% New Zealand wool and 40% viscose maintains its aesthetics and durability.
<b>Additional prices</b>	For special shape the surcharge is 20% of the rug.
<b>Size deviation</b>	Because of the nature of the skin size deviations are up to about 2% possible. This product can stretch a little bit.
<b>Colour</b>	Each rug has a unique color due to its quality. The color may vary and depend on each dye bath, with a small variation of approximately +/- 7% in colors. <b>Prolonged exposure to sunlight can damage the rug and lead to discoloration.</b>
<b>Anti-slip:</b>	Available separately in two different fixed sizes, as a roll for installation or custom-made for this rug.
<b>Extra information</b>	Please do not store rolls packed longer than 3-4 weeks.





## DESIGN PATTERN BHARAT (200 x 200 cm)

Repeat size (pixels): 787 x 787  
Scale: 1:20



<b>SIZE (M)</b>	Custom
<b>Pile height</b>	Low 8 mm, high 10 mm (including backing)
<b>Material</b>	80% wool, 20% bamboo silk
<b>Quality</b>	Handtufted
<b>Price m<sup>2</sup> incl. VAT</b>	On request
<b>Number of colourcombinations</b>	5
<b>Delivery time (approx.)</b>	12-14 weeks



01



02



03



04



05

*\* PLEASE ASK A DRAWING/ARTWORK BEFORE ORDERING!*

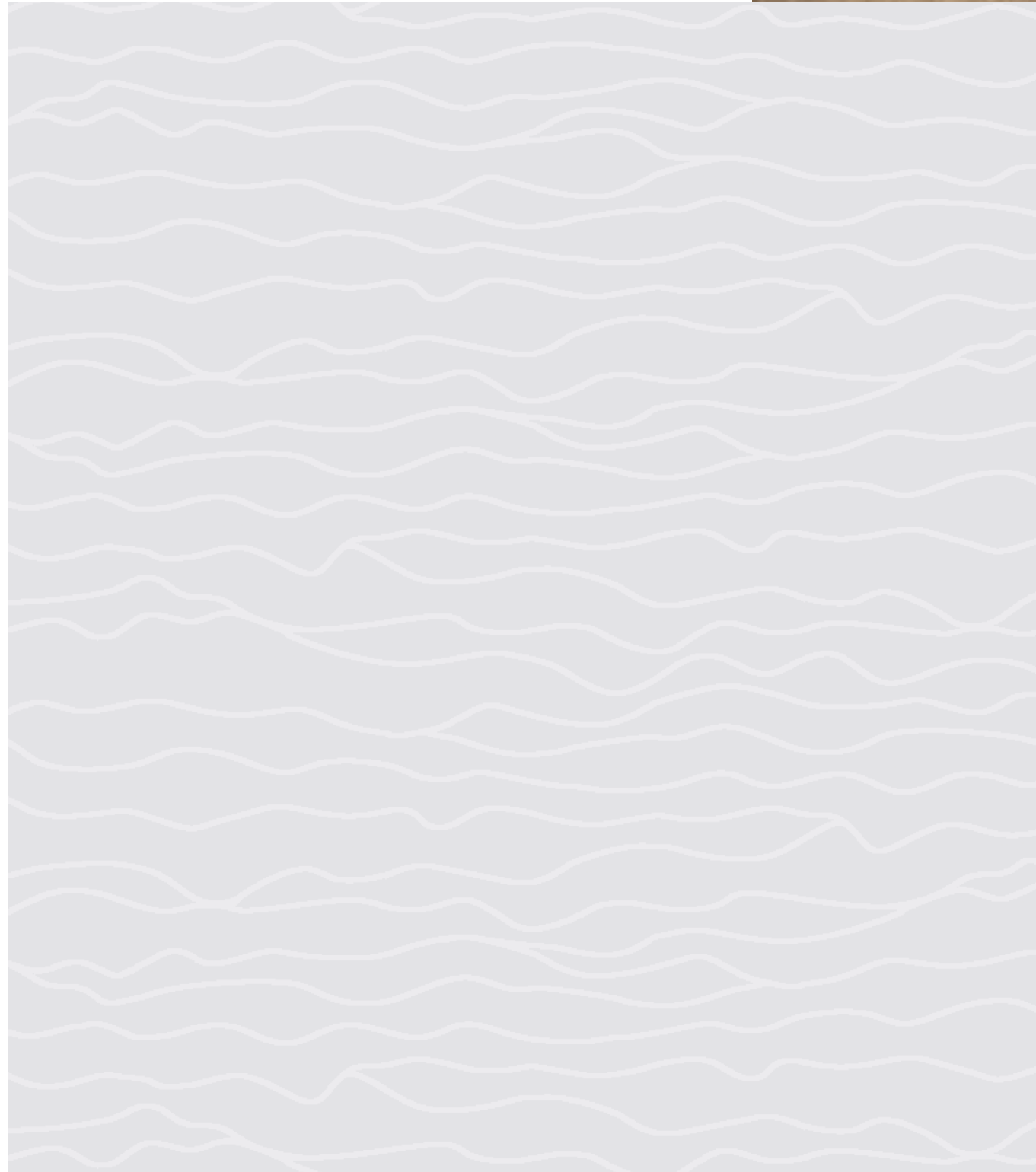
## PRODUCT INFORMATION

<b>General information</b>	Regular maintenance is essential to preserve the lifespan and appearance of a rug made from 100% New Zealand wool
<b>Maintenance</b>	Regular vacuuming is crucial to remove dust, dirt, and loose fibers. Use a vacuum with a soft brush to prevent fiber damage. Immediate treatment of stains is crucial to prevent them from penetrating the fibers. Blot excess moisture with a soft cloth or paper towel before gently treating the stain. Consider periodic professional cleaning to address deeper stains and general cleaning. Ensure the professional cleaner is informed of the rug's composition for appropriate cleaning methods. Regularly rotating the rug promotes even wear. Additionally, avoid prolonged exposure to direct sunlight to prevent discoloration and limit exposure to moisture. Do not place the rug on damp surfaces or expose it to prolonged damp conditions. Use of a suitable rug pad contributes to extending the rug's lifespan, improving stability, and reducing the risk of slipping. Avoid aggressive chemicals or cleaning agents that may be harmful to the fibers. By carefully following these maintenance tips, you can ensure that the rug made from 60% New Zealand wool and 40% viscose maintains its aesthetics and durability.
<b>Additional prices</b>	For special shape the surcharge is 20% of the rug.
<b>Size deviation</b>	Because of the nature of the skin size deviations are up to about 2% possible. This product can stretch a little bit.
<b>Colour</b>	Each rug has a unique color due to its quality. The color may vary and depend on each dye bath, with a small variation of approximately +/- 7% in colors. <b>Prolonged exposure to sunlight can damage the rug and lead to discoloration.</b>
<b>Anti-slip:</b>	Available separately in two different fixed sizes, as a roll for installation or custom-made for this rug.
<b>Extra information</b>	Please do not store rolls packed longer than 3-4 weeks.



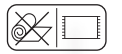


## DESIGN PATTERN MIZO



## MIZO

<b>SIZE (M)</b>	Custom
<b>Pile height</b>	low 9 mm, high 11 mm (including backing)
<b>Material</b>	100% New Zealand wool
<b>Quality</b>	Handtufted
<b>Price m<sup>2</sup> incl. VAT</b>	On request
<b>Number of colourcombinations</b>	6
<b>Delivery time (approx.)</b>	12-14 weeks



001



002



003



004



005



006

\* PLEASE ASK A DRAWING/ARTWORK BEFORE ORDERING!

### PRODUCT INFORMATION

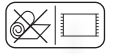
<b>General information</b>	Regular maintenance is essential to preserve the lifespan and appearance of a rug made from 100% New Zealand wool
<b>Maintenance</b>	Regular vacuuming is crucial to remove dust, dirt, and loose fibers. Use a vacuum with a soft brush to prevent fiber damage. Immediate treatment of stains is crucial to prevent them from penetrating the fibers. Blot excess moisture with a soft cloth or paper towel before gently treating the stain. Consider periodic professional cleaning to address deeper stains and general cleaning. Ensure the professional cleaner is informed of the rug's composition for appropriate cleaning methods. Regularly rotating the rug promotes even wear. Additionally, avoid prolonged exposure to direct sunlight to prevent discoloration and limit exposure to moisture. Do not place the rug on damp surfaces or expose it to prolonged damp conditions. Use of a suitable rug pad contributes to extending the rug's lifespan, improving stability, and reducing the risk of slipping. Avoid aggressive chemicals or cleaning agents that may be harmful to the fibers. By carefully following these maintenance tips, you can ensure that the rug made from 60% New Zealand wool and 40% viscose maintains its aesthetics and durability.
<b>Additional prices</b>	For special shape the surcharge is 20% of the rug.
<b>Size deviation</b>	Because of the nature of the skin size deviations are up to about 2% possible. This product can stretch a little bit.
<b>Colour</b>	Each rug has a unique color due to its quality. The color may vary and depend on each dye bath, with a small variation of approximately +/- 7% in colors. <b>Prolonged exposure to sunlight can damage the rug and lead to discoloration.</b>
<b>Anti-slip:</b>	Available separately in two different fixed sizes, as a roll for installation or custom-made for this rug.
<b>Extra information</b>	Please do not store rolls packed longer than 3-4 weeks.





## NEW DELHI

<b>SIZE (M)</b>	Custom
<b>Pile height</b>	8 mm (including backing)
<b>Material</b>	50% wool, 50% bamboo silk
<b>Quality</b>	Handtufted
<b>Price m<sup>2</sup> incl. VAT</b>	On request
<b>Number of colourcombinations</b>	5
<b>Delivery time (approx.)</b>	12-14 weeks



01



02



03



04



05

### PRODUCT INFORMATION

<b>General information</b>	Regular maintenance is essential to preserve the lifespan and appearance of a rug made from 50% New Zealand wool and 50% Bamboo Silk
<b>Maintenance</b>	Regular vacuuming is crucial to remove dust, dirt, and loose fibers. Use a vacuum with a soft brush to prevent fiber damage. Immediate treatment of stains is crucial to prevent them from penetrating the fibers. Blot excess moisture with a soft cloth or paper towel before gently treating the stain. Consider periodic professional cleaning to address deeper stains and general cleaning. Ensure the professional cleaner is informed of the rug's composition for appropriate cleaning methods. Regularly rotating the rug promotes even wear. Additionally, avoid prolonged exposure to direct sunlight to prevent discoloration and limit exposure to moisture. Do not place the rug on damp surfaces or expose it to prolonged damp conditions. Use of a suitable rug pad contributes to extending the rug's lifespan, improving stability, and reducing the risk of slipping. Avoid aggressive chemicals or cleaning agents that may be harmful to the fibers. By carefully following these maintenance tips, you can ensure that the rug made from 60% New Zealand wool and 40% viscose maintains its aesthetics and durability.
<b>Additional prices</b>	For special shape the surcharge is 20% of the rug.
<b>Size deviation</b>	Because of the nature of the skin size deviations are up to about 2% possible. This product can stretch a little bit.
<b>Colour</b>	Each rug has a unique color due to its quality. The color may vary and depend on each dye bath, with a small variation of approximately +/- 7% in colors. <b>Prolonged exposure to sunlight can damage the rug and lead to discoloration.</b>
<b>Anti-slip:</b>	Available separately in two different fixed sizes, as a roll for installation or custom-made for this rug.
<b>Extra information</b>	Please do not store rolls packed longer than 3-4 weeks.

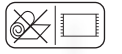
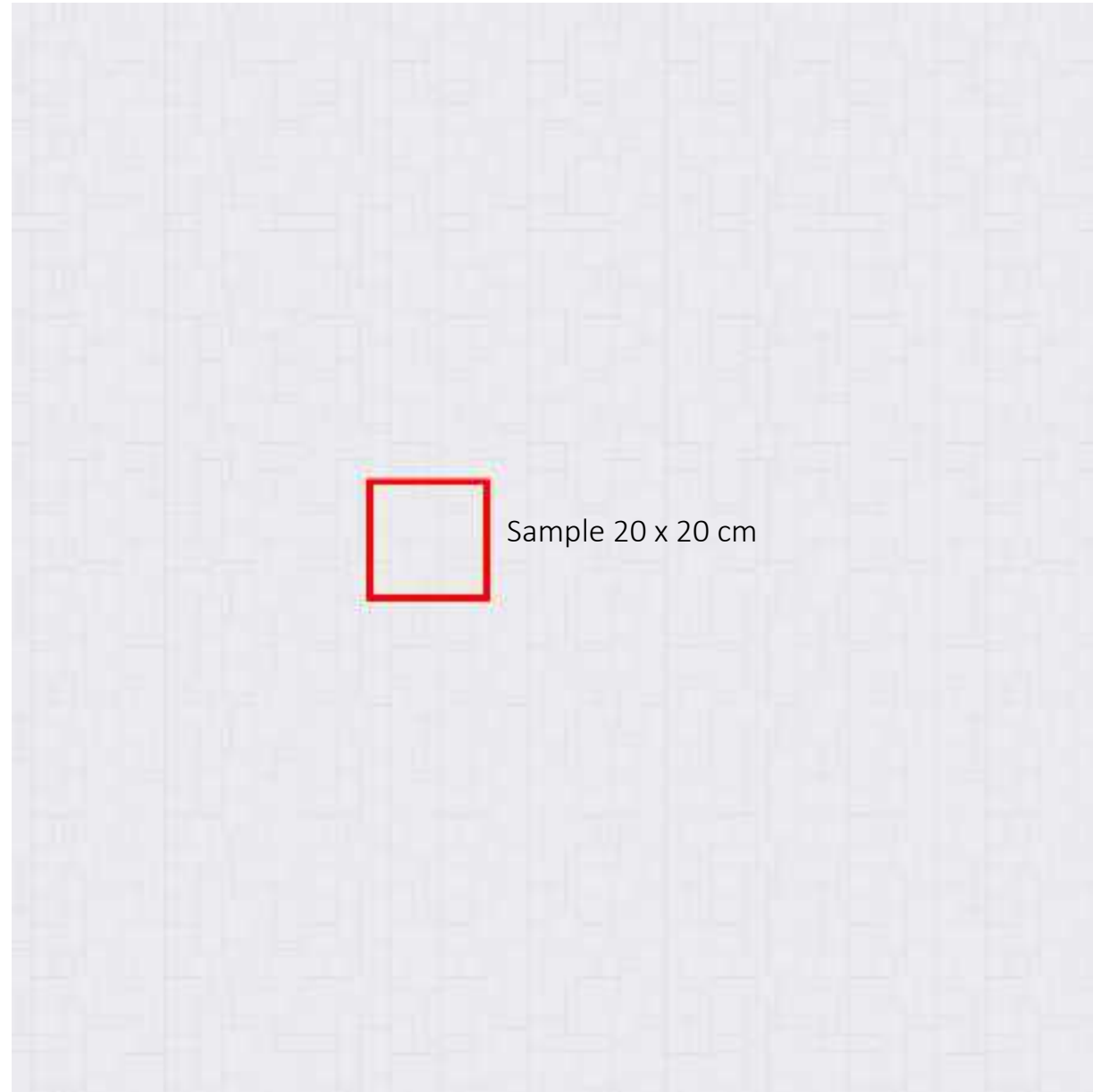




# SHANTI

## DESIGN PATTERN SHANTI (200 x 200cm)

Repeat size: 787 x 787 pixels  
Scale: 1:20



<b>SIZE (M)</b>	Custom
<b>Pile height</b>	Low 8 mm, high 11 mm (including backing)
<b>Material</b>	100% New Zealand Wool
<b>Quality</b>	Handtufted
<b>Price m<sup>2</sup> incl. VAT</b>	On request
<b>Number of colours</b>	6
<b>Delivery time (approx.)</b>	12-14 weeks



01



02



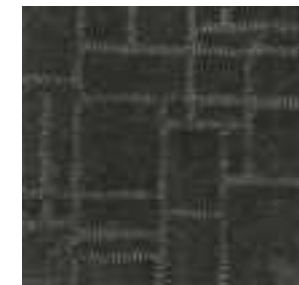
03



04



05



06

\* PLEASE ASK A DRAWING/ARTWORK BEFORE ORDERING!

## PRODUCT INFORMATION

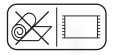
<b>General information</b>	Regular maintenance is essential to preserve the lifespan and appearance of a rug made from 100% New Zealand wool
<b>Maintenance</b>	Regular vacuuming is crucial to remove dust, dirt, and loose fibers. Use a vacuum with a soft brush to prevent fiber damage. Immediate treatment of stains is crucial to prevent them from penetrating the fibers. Blot excess moisture with a soft cloth or paper towel before gently treating the stain. Consider periodic professional cleaning to address deeper stains and general cleaning. Ensure the professional cleaner is informed of the rug's composition for appropriate cleaning methods. Regularly rotating the rug promotes even wear. Additionally, avoid prolonged exposure to direct sunlight to prevent discoloration and limit exposure to moisture. Do not place the rug on damp surfaces or expose it to prolonged damp conditions. Use of a suitable rug pad contributes to extending the rug's lifespan, improving stability, and reducing the risk of slipping. Avoid aggressive chemicals or cleaning agents that may be harmful to the fibers. By carefully following these maintenance tips, you can ensure that the rug made from 60% New Zealand wool and 40% viscose maintains its aesthetics and durability.
<b>Additional prices</b>	For special shape the surcharge is 20% of the rug.
<b>Size deviation</b>	Because of the nature of the skin size deviations are up to about 2% possible. This product can stretch a little bit.
<b>Colour</b>	Each rug has a unique color due to its quality. The color may vary and depend on each dye bath, with a small variation of approximately +/- 7% in colors. <b>Prolonged exposure to sunlight can damage the rug and lead to discoloration.</b>
<b>Anti-slip:</b>	Available separately in two different fixed sizes, as a roll for installation or custom-made for this rug.
<b>Extra information</b>	Please do not store rolls packed longer than 3-4 weeks.







## ZENITH



<b>SIZE (M)</b>	Custom
<b>Pile height</b>	8 mm (including backing)
<b>Material</b>	60% New Zealand wool, 40% viscose
<b>Quality</b>	Handtufted
<b>Price m<sup>2</sup> incl. VAT</b>	On request
<b>Number of colourcombinations</b>	6
<b>Delivery time (approx.)</b>	12-14 weeks



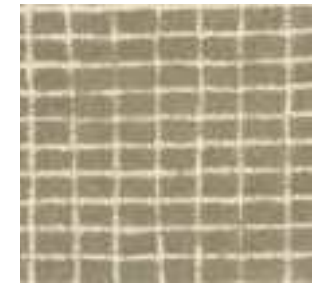
01



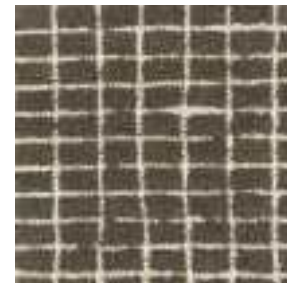
02



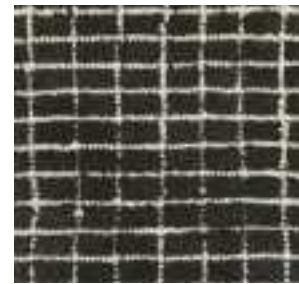
03



04



05



06

### PRODUCT INFORMATION

<b>General information</b>	Regular maintenance is essential to preserve the lifespan and appearance of a rug made from 60% New Zealand wool and 40% viscose.
<b>Maintenance</b>	Regular vacuuming is crucial to remove dust, dirt, and loose fibers. Use a vacuum with a soft brush to prevent fiber damage. Immediate treatment of stains is crucial to prevent them from penetrating the fibers. Blot excess moisture with a soft cloth or paper towel before gently treating the stain. Consider periodic professional cleaning to address deeper stains and general cleaning. Ensure the professional cleaner is informed of the rug's composition for appropriate cleaning methods. Regularly rotating the rug promotes even wear. Additionally, avoid prolonged exposure to direct sunlight to prevent discoloration and limit exposure to moisture. Do not place the rug on damp surfaces or expose it to prolonged damp conditions. Use of a suitable rug pad contributes to extending the rug's lifespan, improving stability, and reducing the risk of slipping. Avoid aggressive chemicals or cleaning agents that may be harmful to the fibers. By carefully following these maintenance tips, you can ensure that the rug made from 60% New Zealand wool and 40% viscose maintains its aesthetics and durability.
<b>Additional prices</b>	For special shape the surcharge is 20% of the rug.
<b>Size deviation</b>	Because of the nature of the skin size deviations are up to about 2% possible. This product can stretch a little bit.
<b>Colour</b>	Each rug has a unique color due to its quality. The color may vary and depend on each dye bath, with a small variation of approximately +/- 7% in colors. <b>Prolonged exposure to sunlight can damage the rug and lead to discoloration.</b>
<b>Anti-slip:</b>	Available separately in two different fixed sizes, as a roll for installation or custom-made for this rug.
<b>Extra information</b>	Please do not store rolls packed longer than 3-4 weeks.





# WALL-TO-WALL / RUG COLLECTIONS



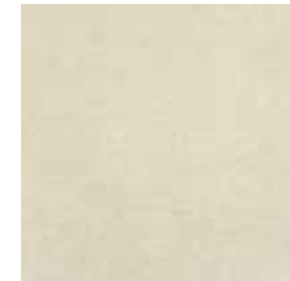
ASPEN - 100% Polyamide - Colour 05





## ASPEN

<b>SIZE (M)</b>	400 cm
<b>Pile height</b>	14 mm (including backing)
<b>Material</b>	100% polyamide
<b>Quality</b>	Machine-tufted
<b>Dyeing Method</b>	Continuous dyed
<b>Weight per M2</b>	3,8kg
<b>Price m<sup>2</sup> incl. VAT</b>	On request (NOTE: calculate m <sup>2</sup> as 400cm width)
<b>Number of colourcombinations</b>	8
<b>Delivery time (approx.)</b>	4-6 weeks



01



02



03



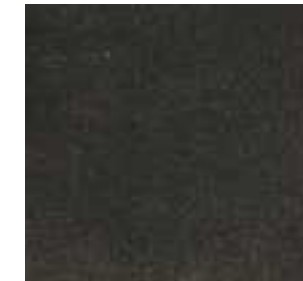
04



05



07



08



09

### PRODUCT INFORMATION

<b>Maintenance</b>	Polyamide is strong, it does not tear, it does not crease, retains its shape, and dries very quickly. Regular vacuuming ensures that you will enjoy this rug for years.
<b>Additional prices</b>	For special shape the surcharge is 20% of the rug. Blind finish: surcharge (on request) per stretching meter.
<b>Size deviation</b>	Because of the nature of the skin size deviations are up to about 3% possible. This product can stretch a little bit.
<b>Colour</b>	Because of the nature of the quality each rug has its unique colour. The colour may differ and depend on each dye bath. Always avoid direct sunlight. Longer periods of exposure to direct sunlight will damage the rug and lead to discolouring.
<b>Anti-slip</b>	is available separately in two different fixed sizes, as a roll for installation or fitted custom made to the carpet.
<b>Backing</b>	Primary Backing: Action backing, Secondary Backing: Cotton Cloth
<b>Extra information</b>	Please do not store rolls packed longer than 3-4 weeks.

**ADDITIONAL PRICES:** \*Additional price with blind finish (on request) per stretching meter. \*Additional price round carpet 20%.  
**ANTI-SLIP:** available separately in two different fixed sizes, as a roll for installation or fitted custom made to the carpet.  
[See page 7](#) of this lookbook for all options we offer.







# MUSE

<b>SIZE (M)</b>	400/500 mtr.
<b>Pile height</b>	13 mm (including backing)
<b>Material</b>	100% Polyamide
<b>Quality</b>	Machinetufted
<b>Dyeing Method</b>	Piece dyed
<b>Weight per M2</b>	2,2kg
<b>Price m<sup>2</sup> incl. VAT</b>	On request (NOTE: calculate m <sup>2</sup> as 400/500 cm width)
<b>Number of colourcombinations</b>	8
<b>Delivery time (approx.)</b>	4-6 weeks



## PRODUCT INFORMATION

<b>Maintenance</b>	Polyamide is strong, it does not tear, it does not crease, retains its shape, and dries very quickly. Regular vacuuming ensures that you will enjoy this rug for years.
<b>Additional prices</b>	For special shape the surcharge is 20% of the rug. Blind finish: surcharge (on request) per stretching meter.
<b>Size deviation</b>	Because of the nature of the skin size deviations are up to about 3% possible. This product can stretch a little bit.
<b>Colour</b>	Because of the nature of the quality each rug has its unique colour. The colour may differ and depend on each dye bath. Always avoid direct sunlight. Longer periods of exposure to direct sunlight will damage the rug and lead to discolouring.
<b>Anti-slip</b>	is available separately in two different fixed sizes, as a roll for installation or fitted custom made to the carpet.
<b>Backing</b>	Primary Backing: Action backing, Secondary Backing: Cotton Cloth
<b>Extra information</b>	Please do not store rolls packed longer than 3-4 weeks.

**ADDITIONAL PRICES:** \*Additional price with blind finish (on request) stretching meter. \*Additional price round carpet 20%.  
**ANTI-SLIP:** available separately in two different fixed sizes, as a roll for installation or fitted custom made to the carpet.  
 See page 6 of this lookbook for all options we offer.







## TENCE

<b>Width</b>	400/500 cm
<b>Pile height</b>	11 mm
<b>Material</b>	100% polyamide 6.6
<b>Quality</b>	Tufted 1/10 cut pile
<b>Dyeing Method</b>	Piece dyed
<b>Weight per M2</b>	1,3kg
<b>Price m<sup>2</sup> incl. VAT</b>	On request (NOTE: calculate m <sup>2</sup> as 400cm width)
<b>Number of colours</b>	9
<b>Delivery time (approx.):</b>	Wall-to-wall: 2-3 weeks      Rug: 4-6 weeks



Usage classification 33



TENCE ICH 001



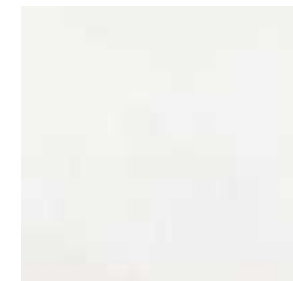
TENCE ICH 002



TENCE ICH 003



TENCE ICH 004



TENCE ICH 005



TENCE ICH 006



TENCE ICH 007



TENCE ICH 008



TENCE ICH 009

### PRODUCT INFORMATION

<b>Maintenance</b>	Polyamide is strong, it does not tear, it does not crease, retains its shape, and dries very quickly. Regular vacuuming ensures that you will enjoy this rug for years.
<b>Additional prices</b>	For special shape the surcharge is 20% of the rug. Blind finish: surcharge (on request) per stretching meter.
<b>Size deviation</b>	Because of the nature of the skin size deviations are up to about 3% possible. This product can stretch a little bit.
<b>Colour</b>	Because of the nature of the quality each rug has its unique colour. The colour may differ and depend on each dye bath. Always avoid direct sunlight. Longer periods of exposure to direct sunlight will damage the rug and lead to discolouring.
<b>Anti-slip</b>	is available separately in two different fixed sizes, as a roll for installation or fitted custom made to the carpet.
<b>Backing</b>	Primary Backing: Action backing, Secondary Backing: Cotton Cloth
<b>Extra information</b>	Please do not store rolls packed longer than 3-4 weeks.

**ADDITIONAL PRICES:** \*Additional price with blind finish (on request) per stretching meter. \*Additional price round carpet 20%.

**ANTI-SLIP:** available separately in two different fixed sizes, as a roll for installation or fitted custom made to the carpet.  
[See page 7](#) of this lookbook for all options we offer.





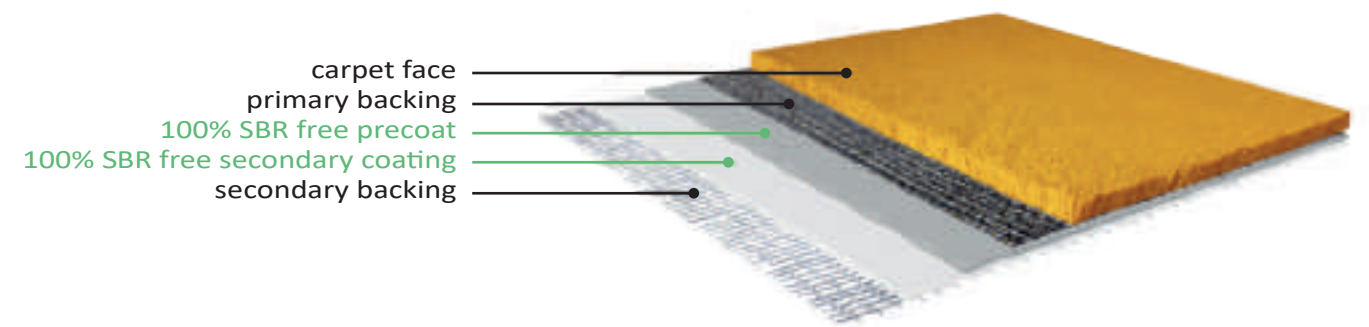
# 100% ECO FRIENDLY COLLECTIONS

## 100% SBR FREE BACKING

The production of tufted carpets consists of several steps of which “backing” is the final. The aim of the backing process is twofold; the primary backing fixates the yarn to the base cloth and the secondary backing improves the lifespan of the carpet. For this, high quality synthetic rubbers (latex) are used. Traditional compounds used for backing carpets contain a latex from styrene-butadiene rubber (SBR). SBR is a family of synthetic rubbers, derived from styrene and butadiene and is commonly used as a replacement for natural rubber.

### A NEW GENERATION

SBR has for decades been unrivaled, however, specific questions raised by different environmentally conscious customers led to the decision to look for a substitute backing. After a period of extensive research and testing, 100% SBF free backing was developed, a backing based on vinyl acetate ethylene (VAE). Backing products with 100% SBF free backing has two advantages: it is eco friendly and it also improves several aspects of the final product.



### INDIVIPRO CARPETS & RUGS QUALITIES PROVIDED WITH THIS 100% SBR FREE BACKING:

Gaudi	119
Giverny	121
Lagos	123
Sofia	125



GIVERNY - colour 03

### THE ADVANTAGES

Vinyl acetate ethylene is produced from acetic acid. In the 1960s researchers succeeded in creating a binder that is now used in a wide range of applications including adhesives, low-odour interior paints and nonwovens. The use of VAE in carpet backing has several advantages:

- **absence of odour:** using VAE ensures that the characteristic odour of new carpets - sometimes perceived as being unpleasant - now belongs to the past.
- **reduced flammability:** tests on films of carpet backing compounds with VAE and SBR showed the VAE films to be far less flammable than the SBR films. The backing compound based on SBR burnt completely and even released a black smoke in the process (as shown in the illustration on the right). 100% SBR free backing is therefore ideal in commercial locations such as hotels, offices and aircraft where fire safety is a high priority.
- **lower emissions of volatile organic compounds:** volatile organic compounds (VOCs) are chemicals used to manufacture and maintain building materials, interior furnishing and cleaning and personal care products. These carbon based chemicals evaporate into the air, often in indoor environments. Since their surface area is large, floor coverings have the potential to emit such VOCs to the environment. The German Textiles & Flooring Institute GmbH (TFI) tested both VAE and SBR carpet backing for emissions of VOCs. Following the rigorous standards of the GUT label, the emissions of VOCs released by carpets on VAE backing was shown to be much lower than when using an SBR backing (see chart below).
- **quality final product:** the quality of the carpet backing has become more consistent and is now more flexible allowing for easy fitting. 100% SBR free backing also has excellent tuft bind and lamination qualities.

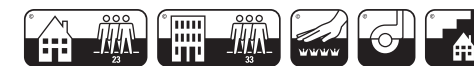






## GAUDI

<b>Width</b>	400 cm
<b>Pile height</b>	8,2 mm
<b>Material</b>	100% Polyamide 6.0
<b>Quality</b>	Machinetufted
<b>Dyeing Method</b>	Piece dyed
<b>Weight per M2</b>	1,2kg
<b>Price m<sup>2</sup> incl. VAT</b>	On request (NOTE: calculate m <sup>2</sup> as 400 cm width)
<b>Number of colours</b>	10
<b>Pattern repeat</b>	400 x 400 cm
<b>Delivery time (approx.):</b>	Wall-to-wall: 3-4 weeks      Rug: 4-6 weeks



GAU 001



GAU 002



GAU 003



GAU 004



GAU 005



GAU 006



GAU 007



GAU 008



GAU 009



GAU 010

### PRODUCT INFORMATION

<b>Maintenance</b>	Polyamide is strong, it does not tear, it does not crease, retains its shape, and dries very quickly. Regular vacuuming ensures that you will enjoy this rug for years.
<b>Additional prices</b>	For special shape the surcharge is 20% of the rug. Blind finish: surcharge (on request) per stretching meter.
<b>Size deviation</b>	Because of the nature of the skin size deviations are up to about 3% possible. This product can stretch a little bit.
<b>Colour</b>	Because of the nature of the quality each rug has its unique colour. The colour may differ and depend on each dye bath. Always avoid direct sunlight. Longer periods of exposure to direct sunlight will damage the rug and lead to discolouring.
<b>Anti-slip</b>	is available separately in two different fixed sizes, as a roll for installation or fitted custom made to the carpet.
<b>Backing</b>	Primary Backing: Action backing, Secondary Backing: Cotton Cloth
<b>Extra information</b>	Please do not store rolls packed longer than 3-4 weeks.

**ADDITIONAL PRICES:** \*Additional price with blind finish (On request) per stretching meter. \*Additional price round carpet 20%.

**ANTI-SLIP:** available separately in two different fixed sizes, as a roll for installation or fitted custom made to the carpet.  
See page 7 of this lookbook for all options we offer.







## GIVERYNY

**Width** 400 cm.  
**Pile height** 8 mm (including backing)  
**Material** 100% Polyamide 6.0  
**Dyeing Method** Piece dyed  
**Weight per M2** 1,2kg  
**Quality** Machinetufted  
**Price m<sup>2</sup> incl. VAT** On request (NOTE: calculate m<sup>2</sup> as 400 cm width)  
**Number of colourcombinations** 11  
**Delivery time (approx.)** Wall-to-wall: 3-4 weeks      Rug: 4-6 weeks



01

02

03

04

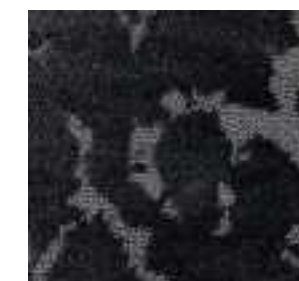


05

06

07

08



09

10

11

### PRODUCT INFORMATION

**Maintenance** Polyamide is strong, it does not tear, it does not crease, retains its shape, and dries very quickly. Regular vacuuming ensures that you will enjoy this rug for years.

**Additional prices** For special shape the surcharge is 20% of the rug. Blind finish: surcharge (on request) per stretching meter.

**Size deviation** Because of the nature of the skin size deviations are up to about 3% possible. This product can stretch a little bit.

**Colour** Because of the nature of the quality each rug has its unique colour. The colour may differ and depend on each dye bath. Always avoid direct sunlight. Longer periods of exposure to direct sunlight will damage the rug and lead to discolouring.

**Anti-slip** is available separately in two different fixed sizes, as a roll for installation or fitted custom made to the carpet.

**Backing** Primary Backing: Action backing, Secondary Backing: Cotton Cloth

**Extra information** Please do not store rolls packed longer than 3-4 weeks.

**ADDITIONAL PRICES:** \*Additional price with blind finish (on request) per stretching meter. \*Additional price round carpet 20%.  
**ANTI-SLIP:** available separately in two different fixed sizes, as a roll for installation or fitted custom made to the carpet.  
[See page 7](#) of this lookbook for all options we offer.











## SOFIA

<b>Width</b>	400 cm
<b>Pile height</b>	8 mm (including backing)
<b>Material</b>	100% Polyamide 6.0
<b>Quality</b>	Machinetufted
<b>Dyeing Method</b>	Piece dyed
<b>Weight per M2</b>	1,2kg
<b>Price m<sup>2</sup> incl. VAT</b>	On request (NOTE: calculate m <sup>2</sup> as 400 cm width)
<b>Number of colours</b>	6
<b>Delivery time (approx.)</b>	Wall-to-wall: 3-4 weeks      Rug: 4-6 weeks

100%  
SBR free  
backing



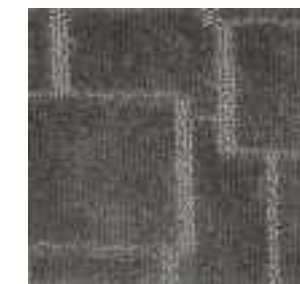
01



02



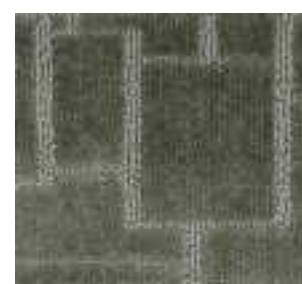
03



04



05



06

### PRODUCT INFORMATION

<b>Maintenance</b>	Polyamide is strong, it does not tear, it does not crease, retains its shape, and dries very quickly. Regular vacuuming ensures that you will enjoy this rug for years.
<b>Additional prices</b>	For special shape the surcharge is 20% of the rug. Blind finish: surcharge (on request) per stretching meter.
<b>Size deviation</b>	Because of the nature of the skin size deviations are up to about 3% possible. This product can stretch a little bit.
<b>Colour</b>	Because of the nature of the quality each rug has its unique colour. The colour may differ and depend on each dye bath. Always avoid direct sunlight. Longer periods of exposure to direct sunlight will damage the rug and lead to discolouring.
<b>Anti-slip</b>	is available separately in two different fixed sizes, as a roll for installation or fitted custom made to the carpet.
<b>Backing</b>	Primary Backing: Action backing, Secondary Backing: Cotton Cloth
<b>Extra information</b>	Please do not store rolls packed longer than 3-4 weeks.

**ADDITIONAL PRICES:** \*Additional price with blind finish on request per stretching meter. \*Additional price round carpet 20%.

**ANTI-SLIP:** available separately in two different fixed sizes, as a roll for installation or fitted custom made to the carpet.  
[See page 7](#) of this lookbook for all options we offer.







# OUTDOOR COLLECTIONS



Cannes - 100% Polypropyleen - colour 04



## CANNES

**Max width:** 305cm  
**Pile height** 14-15 mm  
**Material** 100% polypropyleen  
**Quality** Handwoven  
**Price m<sup>2</sup> incl. VAT** On request / Round: On request  
**Number of colours** 4  
**Delivery time (approx.)** 12-14 weeks



01



02



03



04

## COMO

**Max width** 549cm  
**Pile height** 14-15 mm  
**Material** 84 % polypropyleen, 16 % polyester  
**Quality** Handwoven  
**Price m<sup>2</sup> incl. VAT** On request / Round: On request  
**Number of colours** 2  
**Delivery time (approx.)** 12-14 weeks



01



02

## EGYPT

**Max width** 305cm  
**Pile height** 9-10 mm  
**Material** 100% polyester  
**Quality** Handwoven  
**Price m<sup>2</sup> incl. VAT** On request/ Round: On request  
**Number of colours** 2  
**Delivery time (approx.)** 12-14 weeks



01



02



COMO - 84% Polypropyleen 16&POLYESTER - colour 01





## GREECE

<b>Max width</b>	549cm
<b>Pile height</b>	14-15 mm
<b>Material</b>	100% polypropyleen
<b>Quality</b>	Handwoven
<b>Price m<sup>2</sup> incl. VAT</b>	On request / Round: On request
<b>Number of colours</b>	2
<b>Delivery time (approx.)</b>	12-14 weeks



01



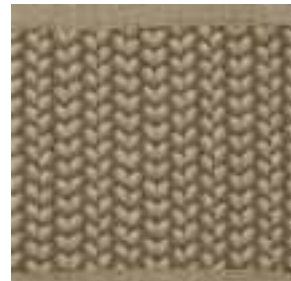
02

## MALTA

<b>Max width</b>	305cm
<b>Pile height</b>	14-15 mm
<b>Material</b>	100% polyester
<b>Quality</b>	Handwoven
<b>Price m<sup>2</sup> incl. VAT</b>	On request / Round: On request
<b>Number of colours</b>	2
<b>Delivery time (approx.)</b>	12-14 weeks



01



01

## MARBELLA

<b>Max width</b>	396cm
<b>Pile height</b>	12-13 mm
<b>Material</b>	84% polypropyleen, 16% Polyester
<b>Quality</b>	Handwoven
<b>Price m<sup>2</sup> incl. VAT</b>	On request / Round: On request
<b>Number of colours</b>	4
<b>Delivery time (approx.)</b>	12-14 weeks



01



02



02



02



St. Tropez - 100% Polypropyleen - colour 04





## ST.TROPEZ

<b>Max width</b>	305cm
<b>Pile height</b>	12-13 mm
<b>Material</b>	40% polypropylen, 60% polyester
<b>Quality</b>	Handwoven
<b>Price m<sup>2</sup> incl. VAT</b>	On request / Round: On request
<b>Number of colours</b>	4
<b>Delivery time (approx.)</b>	12-14 weeks



01



01



01



01

## TUNIS

<b>Max width</b>	488cm
<b>Pile height</b>	17-18 mm
<b>Material</b>	100% polypropylen
<b>Quality</b>	Handwoven
<b>Price m<sup>2</sup> incl. VAT</b>	On request
<b>Number of colours</b>	2
<b>Delivery time (approx.)</b>	12-14 weeks



01



02

## GENERAL INFORMATION OUTDOOR COLLECTION

### PRODUCT INFORMATION

<b>Qualities</b>	The outdoor collection is made of Polypropylen and Polyester.
<b>Maintenance</b>	Weekly recommended: Use a broom or carpet sweeper for gentle and effective cleaning. Spilled liquids: Immediately dab with a solution of mild soap and water. Smaller sizes: Machine washable, rinsing is also an option. Drying process: Lay the carpet flat to dry, preferably outdoors. Take precautions to protect the floor during drying. Professional cleaning: Recommended if stains cannot be successfully removed with household products. Anti-slip underlays: Contribute to a longer lifespan of the carpet. Avoid chlorine and saltwater to prevent damage. Outdoor use: Bring indoors every few days to maintain quality and extend lifespan.
<b>Colour</b>	Each carpet has a unique color due to its quality. Color may vary and depend on each dye batch, with a slight variation of approximately +/- 7% in colors. Prolonged exposure to direct sunlight may cause damage and discoloration.
<b>Size deviation</b>	Size deviations are up to about 2% possible. Because of the nature of this quality, this product can stretch a little bit.
<b>Anti-slip</b>	Available separately in two different fixed sizes, as a roll for installation or custom-made for this carpet.
<b>Extra information</b>	Please do not store rolls packed longer than 3-4 weeks.
<b>Warranty</b>	See terms and conditions







EU classification for level of use  
EU-Nutzungskategorie  
Norme d'usage UE  
EU-classificaties volgens eindgebruik



Avoid contact with water and liquids  
Kontakt mit Wasser und Flüssigkeiten vermeiden  
Évitez tout contact avec de l'eau et des liquides  
Vermijd contact met water en vloeistoffen



EU fire classification Cs1  
EU-Feuerwiderstandsklasse Cs1  
Classe incendie UE Cs1  
EU-classificatie brandwerendheid Cs1



LC 5 luxury class  
Luxusklasse LC 5  
Classe de luxe LC 5  
LC 5 luxe klasse



EU classification for use  
EU-Nutzungskategorie  
Classe d'utilisation UE  
EU-gebruikscategorie



Antistatic  
Antistatisch  
Antistatique  
Antistatisch



Resistance to fraying  
Widerstandsfähig gegen Ausfransen  
Résistance à l'effilochage  
Bestand tegen rafelen



Acoustical impact noise EN ISO 140-6  
Akustische Trittschalldämmung EN ISO 140-6  
Bruit d'impact acoustique EN ISO 140-6  
Contactgeluidwering EN ISO 140-6



Sound absorption EN ISO 354  
Schallabsorption EN ISO 354  
Absorption acoustique EN ISO 354  
Geluidsabsorptie EN ISO 354



Light fastness EN ISO 105-B02  
Lichtechtheit EN ISO 105-B02  
Stabilité à la lumière EN ISO 105-B02  
Lichtechtheit EN ISO 105-B02



DS slip resistance EN 14041  
Rutschfestigkeit DS nach EN 14041  
Résistance au glissement DS EN 14041  
DS slipweerstand EN 14041



Suitable for castor chairs  
Stuhlrollengeeignet  
Convient aux chaises à roulettes  
Geschikt voor stoelen met wieltjes



Suitable for stairs  
Treppengeeignet  
Convient pour des escaliers  
Geschikt voor trappen



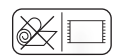
POM-POM from the Designer boxes, not included in standard collections  
POM-POM aus der Designer Box, nicht in der Standardkollektion enthalten  
POM-POM de la Designer Box, pas inclus dans les collections standard  
POM-POM uit de Designer Box, niet inbegrepen in de standaardcollectie



Available for indoor and outdoor use  
Geeignet für den Innen- und Außenbereich  
Disponible pour une utilisation intérieure comme extérieure  
Geschikt voor binnen- en buitengebruik



Available as broadloom and as a rug  
Als Auslegeware und als Teppich erhältlich  
Disponible en moquette et en tapis  
Beschikbaar als kamerbreed tapijt en vloerkleed



Only available as a rug  
Nur als Teppich erhältlich  
Uniquement disponible sous forme de tapis  
Alleen beschikbaar als vloerkleed



Eco Friendly 100% SBR free backing  
Umweltfreundliche 100% SBR-freie Unterlage  
Support écologique 100% sans SBR  
Ecologisch verantwoord, 100% SBR-vrije backing

All our rugs are made with understanding and expertise. Either handmade by skilled craftsmen, or in a specialty manufacturing facility. All rugs are finished with care and are quality checked before shipment. Each type of rug needs specific care to ensure a certain longevity. The following simple facts will help you understand your rug.

### COLOUR

No two rugs are the same. Slight colour variations are common for handmade rugs, as dye lots may slightly differ over a period of time. To minimize these differences and to fulfill the client's expectations whenever it is required a colour match, we strongly recommend asking for a sample or pom for colour approval.

### SIZES

Deviations up to 3% (Handtufted) and 5% (Handwoven & Flat-Weave) in the sizes are possible, since rugs are a textile and therefore flexible product. Handmade rugs may vary in size slightly, as each piece is unique.

### WEAR

It is highly recommended to rotate your rug 180 degrees every 3-6 months to balance appearance and to distribute wear evenly. Regular vacuuming (1 or 2 times per week) minimizes the wear of your rug.

### CREASES

Creases or a wavy effect may appear on your rug after being kept rolled for long periods. It should disappear within a week or two when the rug is laid out flat on a plain surface. Rolling the rug in reversed way overnight will help.

### ODOR

A characteristic odor can sometimes appear after unpacking the packaging material of your new rug. Smells are caused by dyes, yarns and shipping for long distances in sealed wrap. Most odors will vanish within a week once the rug is removed from its packaging. You can also ensure proper air circulation by airing out the room where the rugs are at, by opening windows and doors, which speed up the odor removal.

### FADING

All rugs will fade somewhat over time. It's very important that rugs are turned regularly, so that the effects caused by light and normal wear might be equivalent in the whole surface of the rug. It's recommended a window protection whenever a rug is exposed directly to sunlight.

### SHADING

All cut pile carpets shade. This phenomenon is caused by a slight directional change in the pile, forcing light to reflect differently on the surface. It is similar to shading in velvet fabrics. This is not a manufacturing or quality defect and will reverse naturally during use and regular vacuuming (1 or 2 times per week).

### SPROUTS

Sprouts are a normal part of the break-in process of handmade rugs. To remove sprouts from a cut- or loop-pile carpet, use a small pair of scissors to cut them off even with the other piles. It is recommended to not pull the piles out, as this can cause other piles to loosen too. To remove sprouts from a flatweave rug, use a thick (crochet) needle to tuck the loose pile back into the rug. Do not cut piles from a flatweave rug to avoid breaking the structure.

### SHEDDING

All cut pile rugs will shed. Shedding is caused by fibers in the yarn that are cut short and get detached from the pile. This will subside over time, depending on traffic and wear. The duration of shedding also varies per yarn type and is influ-

enced by the humidity of the environment (humidity should be +/- 50-60%). A dry environment will cause more shedding. To minimize this natural phenomenon, it's recommended to vacuum the rug regularly (1 or 2 times per week). To speed up this feature, we recommend placing the rug on a high traffic area to shorten the time of shedding.

### VACUUMING

Vacuuming is the best way to remove everyday dirt and dust. In the first year, we recommend vacuuming at least 2 times a week to remove excess fuzz that accumulates on the rug's surface. A good vacuum cleaner should have 1200W and it is recommended the vacuum in the direction of the pile. Check the vacuum bag regularly. A vacuum becomes less efficient if the debris bag is too full. Rugs with a high pile and single-colour rugs need to be vacuumed even more frequently.

### FURNITURE MARKS

When there is furniture placed on the rug, a rug protection, can be used to protect the pile in the long run, like furniture coasters or caster cups. It is recommended to rotate your rug 180 degrees every 3-6 months to balance appearance, so that the effects caused by normal wear and fading from light damage, might be equivalent in the whole surface of the rug.

### LOOSE YARNS

All tufted rugs are produced with an excess of yarns. This is a normal characteristic of this production technique. A tufted rug is produced with thousands of yarns, therefore it's normal and expected that the latex does not hold all these yarns to the backing. The quantity of the loose yarns will start diminishing after some time of usage and it does not affect in any aspect the rug's resistance or quality.

### STORAGE

When storing a rug, it is imperative to roll it. Never fold a rug even for short-term storage, as permanent wrinkles may form. Vacuum the rug before rolling it. Place a card tube on one end of the rug, which should have the same length. Roll the rug within the tube card as tight as possible. Tie the rug securely with adhesive tape and then wrap the rug in a packaging material. Store the rug in a clean dry room in an horizontal position, preferably on a surface that it's not in direct contact to the floor to prevent soiling (example: wooden pallet). Storage for long periods (more than 2 months) are not recommended as it can cause creases and mold on the rug. Periodically unroll and check the rug for signs of damage.

### PILE REVERSAL / SHADING

Rugs may appear to change color in certain areas, similar to watermarks. This phenomenon is not a true color change, but a difference in light reflection between various surface areas. Pile reversal is not a manufacturing defect and does not affect the durability, performance or longevity of the rug. Pile reversal can be defined as a change in the rug's appearance caused by the difference in the way light reflects off the sides and tip of a yarn as the pile lays in different directions. Areas of cut pile leaning towards the observer will appear darker whereas pile tufts leaning away will appear lighter. This may give the appearance of a colour change, which is just an optical effect. These effects can be temporary or permanent. Pile reversal is a normal phenomenon for any cut pile rug made from any type of yarn. To minimize this, it's recommended to vacuum on a regular basis the rug's pile in the direction of its natural lay.





*Luxury tailor made floor,  
window and wall decoration*

Are you looking for unique window decoration products? Check out the collection of our sister company Indivipro Window Decoration.

Indivipro window decoration, our sister company, is a wholesaler and importer of Nature Deco and Lutron and also has its own workshop for their fabrics. By several designers, including Marcel Wolterinck and François Hannes, they have had a number of exclusive fabrics designed. For the vast majority of the curtain collection they work together with a famous Italian weaving company that almost exclusively serves the top segment brands like Missoni and Armani.

In the branch of window decoration, they completely unburden architects and designers. With the production in their own workshop and team of specialized people, they can realize any project at home or abroad. Customization is the biggest strength of Indivipro. They have gained experience over the past 15 years for partners such as Piet Boon and Eric Kuster.

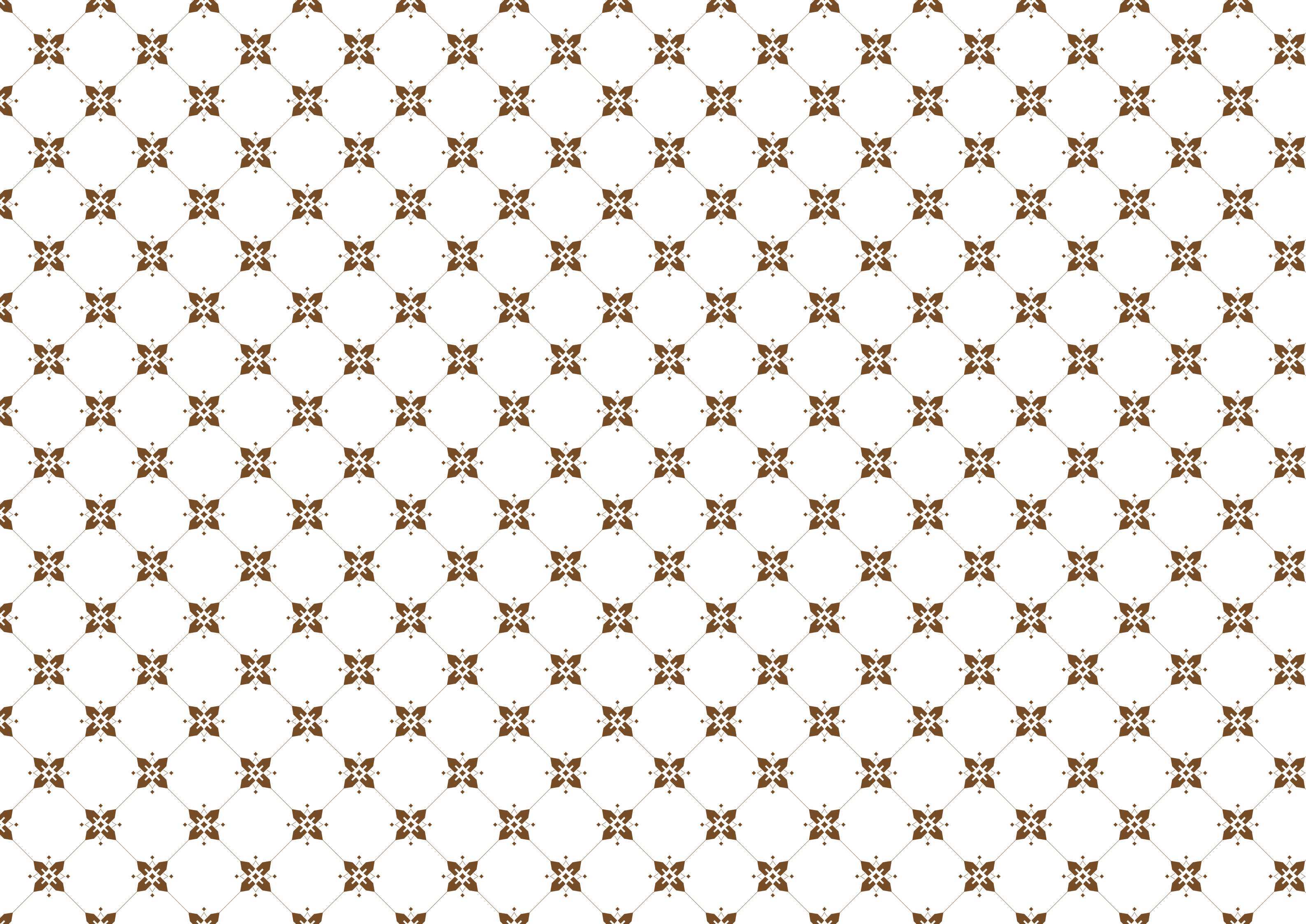
Are you interested in the products of Indivipro? Please contact our sales team at [info@indivipro.nl](mailto:info@indivipro.nl) or +31 (0) 88 500 1500-















# INDIVIPRO

VONDERWEG 39, 7468 DC ENTER | [INFO@INDIVIPRO.COM](mailto:INFO@INDIVIPRO.COM) | +31(0) 88 500 1500  
FOR VISITING ONE OF OUR SHOWROOMS, PLEASE CONTACT US

**INDIVIPRO.COM**